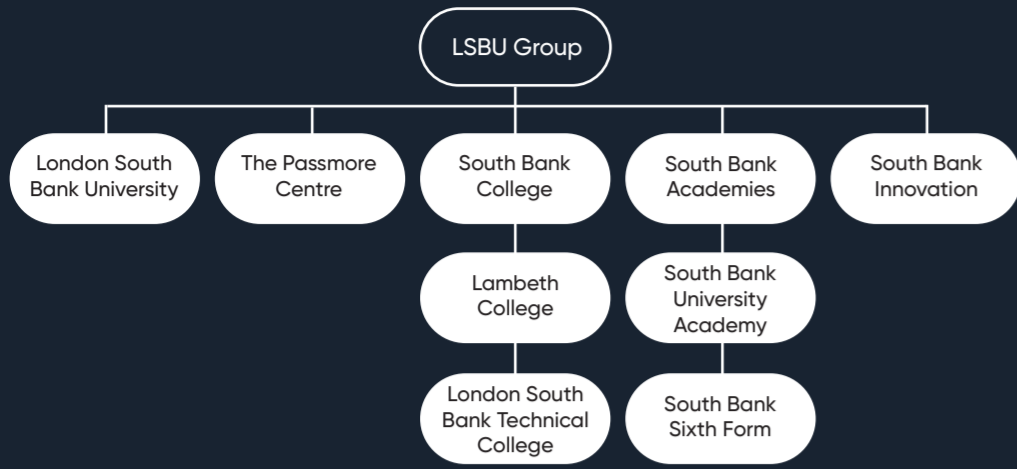


Fit for the future, ready for the real world.

Our goal is to help you succeed, no matter what your age, background, or educational experience. We provide career-focused pathways across all levels, from Entry to Level 8, providing high-quality education and sector specific learning to prepare you for your life beyond education and qualifications.



Joining LSBU Group gives our students unrivalled access to educational opportunities, advice and guidance as well as sought-after apprenticeships and work placements. Our students are guaranteed progression to both LSBTC and LSBU*.

Whether your next destination is within LSBU Group or elsewhere, we are one of a handful of providers who offer students the opportunity to progress to one of our new Level 4 one-year courses. Successful completion of this enables our students to fast-track to year 2 of an LSBU degree, saving money as well as providing a standalone qualification that employers recognise should you decide to leave your studies there.

*after successful completion of a Group qualification that has a progression route

Part of **LSBU | GROUP**



Further information about careers in Health and Social Care can be found here:

- www.healthcareers.nhs.uk
- www.skillsforcare.org.uk
- www.everydayisdifferent.com
- www.careerpilot.org.uk
- www.nationalcareers.service.gov.uk
- www.startprofile.com

Places on Health and Social Care courses, at all levels, are highly sought-after every year. If you believe this is the career pathway for you, but you lack hands-on experience, then we advise you to seek a placement prior to applying.

The following websites are a great place to start:

- www.england.nhs.uk/participation/get-involved/volunteering
- www.guysandstthomas.nhs.uk/careers/other-types-of-work/volunteering/volunteering.aspx
- www.southlondoncares.org.uk/get-involved
- www.london.gov.uk
- www.kch.nhs.uk/about/get-involved/volunteering
- www.handsonlondon.org.uk
- www.healthwatchlambeth.org.uk/volunteer

LSBU | GROUP



HEALTH AND SOCIAL CARE



The Need for Health and Social Care Roles

A career in Health and Social Care is much more than just a job; it is a hugely-rewarding vocation and, for many, a true calling. It takes a very special person to succeed in this sector, but for those of you who possess the right personal qualities, dedication, and attitude, a lifetime of rewarding and fulfilling employment awaits you.



3.2 million people currently working in the Health and Social Care sector in the UK

There are around **152,000** job opportunities across England's Health & Social Care sector, reflecting strong demand & growing career prospects within a workforce of over **3.2 million**.

Health and Social Care remains one of the UK's most advertised job sectors, driven by high demand and ongoing workforce turnover.

An Introduction to Health and Social Care

The **Health and Social Care** sector in England encompasses a wide range of organisations dedicated to improving physical and mental health, wellbeing, and independence. These include hospitals, clinics, care homes, nurseries, dental practices, and community outreach services. The sector is broadly divided into Healthcare – which focuses on diagnosing and treating medical conditions, primarily through the NHS – and Social Care, which offers non-clinical support such as child protection, youth services, residential care, and end-of-life support.

Social Care careers offer diverse entry points, with many roles requiring vocational training rather than academic degrees. In 2025, 67% of social care staff hold at least an NVQ Level 2 qualification, reflecting the sector's emphasis on practical, on-the-job training. Despite growing demand, the system faces challenges in access and workforce capacity. However, innovation and quality improvements continue to shape a more responsive and inclusive care landscape.

LSBU Group is one of the UK's leading providers of clinical education for allied health and related professions. Our healthcare programmes are designed to reflect current industry developments, ensuring students gain relevant, up-to-date skills. Through partnerships with over 60+ NHS organisations, students benefit from expert-led teaching and hands-on placements in hospitals, clinics, and community settings—preparing them to become confident, qualified healthcare professionals.



I chose this course because I want to build a career in the events industry, and it's given me the knowledge and real-world experience I need to move forward. Studying part time has allowed me to continue working while developing my skills, which has been essential for balancing my commitments. The course feels closely connected to the industry, especially through field trips and practical learning, which have really deepened my understanding beyond the classroom.

Ayah B
Postgraduate Diploma in Midwifery
LSBU



Is Health and Social Care the Right Pathway for You?

While qualifications and placements provide essential knowledge and experience, a successful career in Health and Social Care also relies on key personal attributes and transferable skills. These include strong communication and active listening, the ability to build trust with individuals and teams, and confidence in applying professional judgement. You'll need solid organisational and IT skills, emotional resilience under pressure, and a high level of compassion, empathy, and discretion – qualities that ensure safe, person-centred care across diverse settings.

Careers in Health and Social Care

With over 350 recognised roles across Health and Social Care, this sector offers a diverse and rewarding career landscape for those with the right ambition, values, and personal qualities. Whether you're just starting out or looking to progress, many roles allow you to build experience, gain qualifications, and advance along a flexible career pathway.

In Healthcare, you could be a frontline professional in a hospital ward, operating theatre, or community clinic – or work behind the scenes in labs, offices, or digital health services. Roles include Nurses, Midwives, Physiotherapists, Radiographers, and Biomedical Scientists, with opportunities to specialise or move into leadership.

In Social Care, you'll support individuals with non-clinical needs, helping them live healthier, more independent lives. Careers span home care, residential settings, day centres, and supported housing, with roles such as Social Workers, Care Coordinators, and Community Support Workers. The sector values empathy, resilience, and relationship-building skills.

As Health and Social Care services become more integrated, many roles now bridge both areas—such as Occupational Therapists, Healthcare Support Workers, and Health Promotion Specialists – reflecting shared values of compassion, collaboration, and person-centred care

The NHS in England is estimated to require around 314,000 additional full-time equivalent staff by 2030/31 to deliver care at 2018/19 levels, assuming moderate productivity improvements.

The salary for a Care Manager averages from around **£27k to £56k p.a.**, while some senior managers can earn up to **£72k**; Biomedical Scientist salaries range from **£28k to £46k**, rising to closer to **£60k to £75k** for consultant biomedical scientists who have reached the top of their field; a Dental Nurse can expect a starting salary of around **£23k** rising to **£33k** with experience; once qualified, a Health Promotion Specialist average wage is between **£27k to £32k**, rising to **£39k to £46k** with suitable experience. Those working at a very senior level can earn from **£40k to £46k**; newly-qualified Midwives and Nurses start at around **£28k** but once experienced the pay ranges from **£33k to £39k**. Those working in senior positions can earn **£40k to £46k**, while nurse consultants can earn up to **£78k**.

There are plenty of opportunities open to you. Here are just a few ideas:

- Ambulance Driver
- Anaesthesia Technician
- Biomedical Scientist
- Care Manager
- Charity Officer
- Community Development Officer
- Community Support Worker
- Counsellor
- Dental Hygienist
- Dental Technician
- Dentist
- Dietician
- Health Promotion Specialist
- Healthcare Support Worker
- Mental Health Practitioner
- Midwife
- Nurse
- Occupational Therapist
- Paediatrician
- Paramedic
- Pharmacist
- Physiotherapist
- Public Health Manager
- Psychologist
- Social Worker
- Social Work Assistant
- Youth Worker

Our College prides itself on being an accessible, diverse, inclusive environment with a collective passion to improve human health, understand fundamental life processes and develop new technologies and treatments. As one of the largest providers of health education in London, we make a difference to our local communities and share knowledge worldwide. I look forward to working together with you to foster an outstanding student experience, develop innovative research and build impactful industry and community partnerships.

Dr Julia Warrenner,
Executive Dean, College of Health and Life Sciences

HEALTH AND SOCIAL CARE



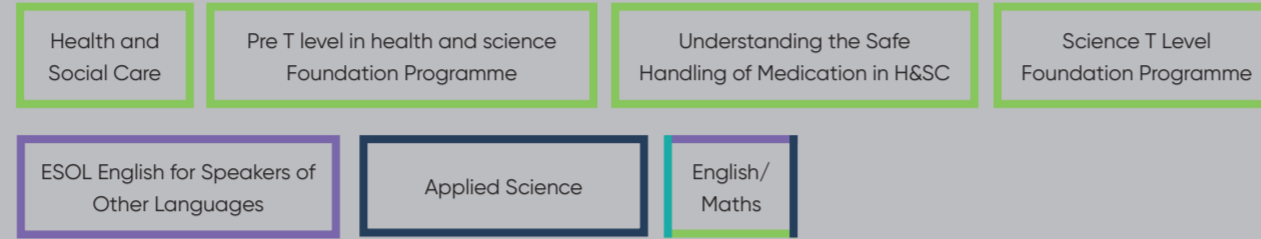
ENTRY LEVEL
Award, Certificate (ELC), Diploma
English for speakers of Other languages (ESOL)
Essential skills
Functional skills
Skills for Life



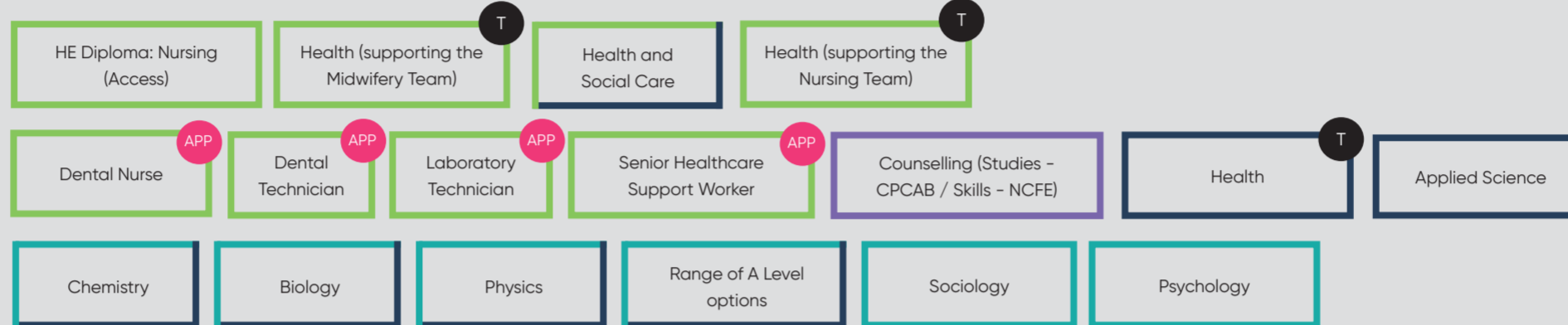
LEVEL 1
First Certificate, Award, Certificate, Diploma, ESOL
Essential skills
Functional skills
National vocational qualification (NVQ)



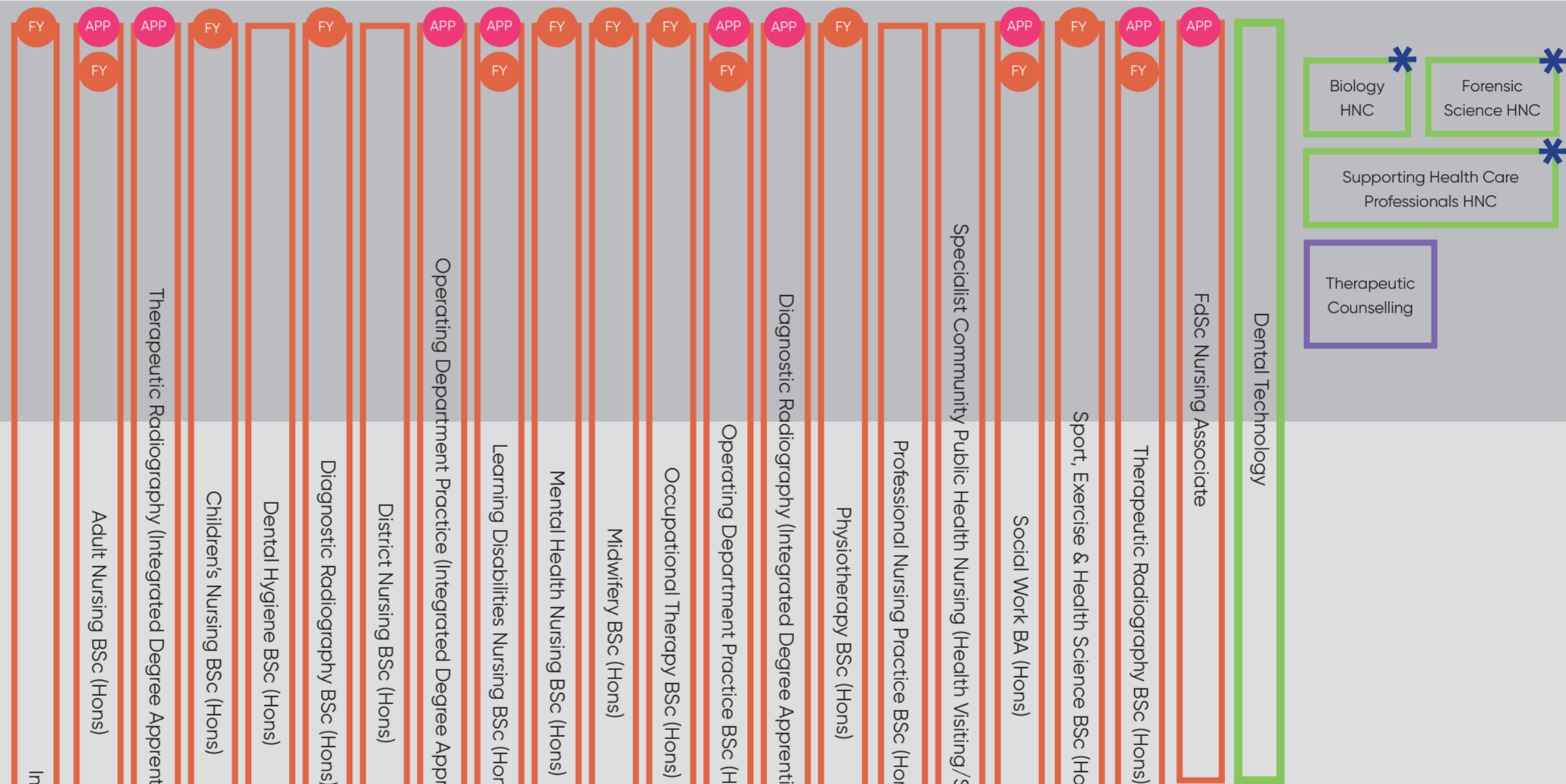
LEVEL 2
Intermediate Apprenticeship, Award, Certificate, Diploma, ESOL
Essential skills
Functional skills
NVQ
GCSE
Technical Certificate



LEVEL 3
Access to HE Diploma
Advanced Apprenticeship
A Level
Applied General
Award, Certificate, Diploma, ESOL
NVQ
T Level
Technical Diploma

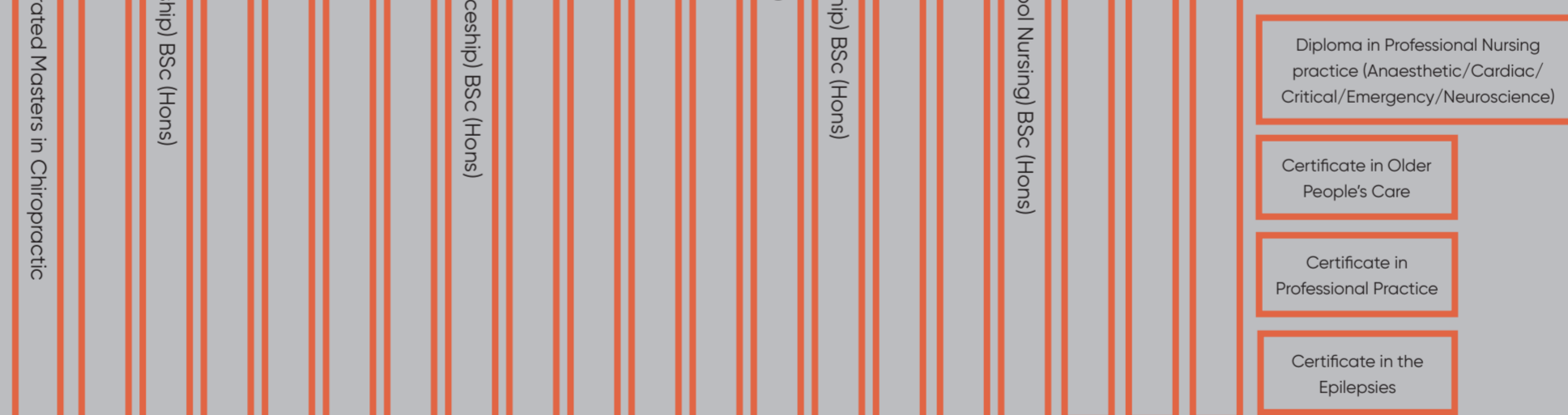


LEVEL 4
CertHE
Higher Apprenticeship
HNC
Award, Certificate, Diploma
NVQ

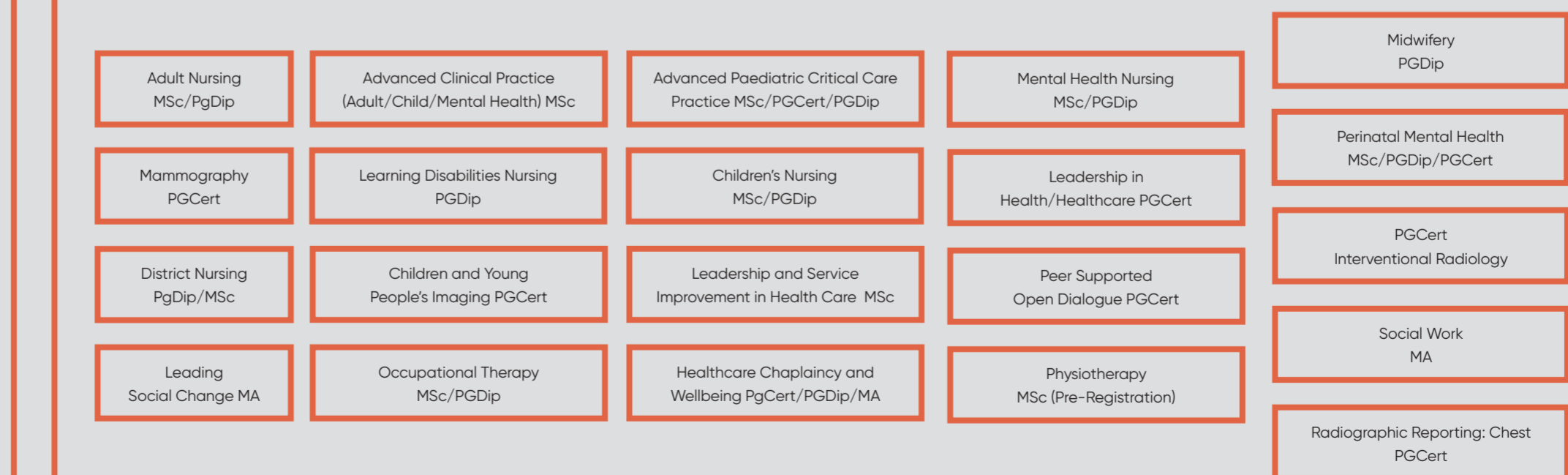


LEVEL 5
DipHE
Foundation Degree
HND
Award, Certificate, Diploma
NVQ

LEVEL 6
Degree Apprenticeship
Degree (with or without Honours)
Graduate Certificate/Diploma
Award, Certificate, Diploma
NVQ



LEVEL 7
Integrated Master's Degree
Award, Certificate, Diploma, NVQ, Master's Degree
Postgraduate Certificate / Diploma
Postgraduate Certificate in Education (PGCE)



LEVEL 8
Doctorate (PhD or DPhil)
Award, Certificate, Diploma

