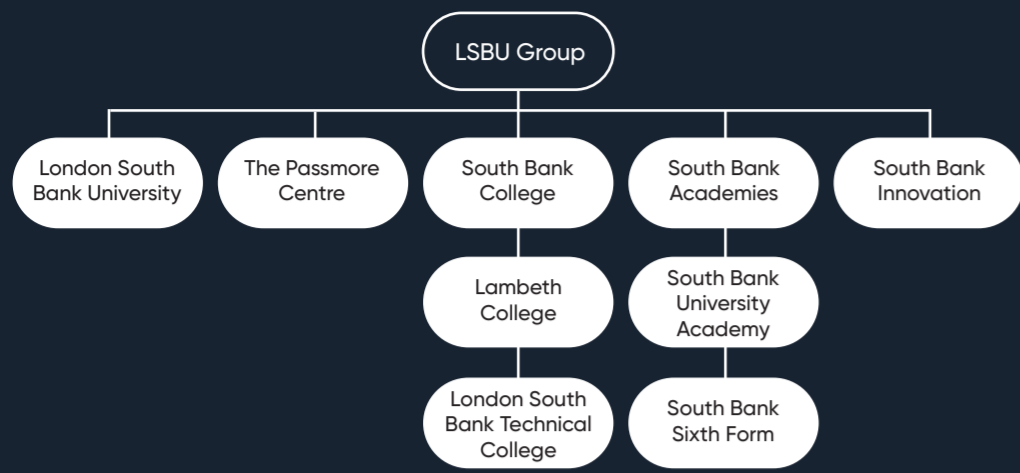


Fit for the future, ready for the real world.

Our goal is to help you succeed, no matter what your age, background, or educational experience. We provide career-focused pathways across all levels, from Entry to Level 8, providing high-quality education and sector specific learning to prepare you for your life beyond education and qualifications.



Joining LSBU Group gives our students unrivalled access to educational opportunities, advice and guidance as well as sought-after apprenticeships and work placements. Our students are guaranteed progression to both LSBTC and LSBU*.

Whether your next destination is within LSBU Group or elsewhere, we are one of a handful of providers who offer students the opportunity to progress to one of our new Level 4 one-year courses. Successful completion of this enables our students to fast-track to year 2 of an LSBU degree, saving money as well as providing a standalone qualification that employers recognise should you decide to leave your studies there.

*after successful completion of a Group qualification that has a progression route

Part of **LSBU | GROUP**



Further information about careers in Engineering can be found here:

- www.careerpilot.org.uk
- www.startprofile.com
- www.prospects.ac.uk
- <https://nationalcareers.service.gov.uk>



Places on Engineering courses, at all levels, are highly sought-after every year. If you believe this is the career pathway for you, but you lack hands-on experience, then we advise you to seek a work experience placement prior to applying.

The following websites are a great place to start:

- www.theiet.org/career/career-support/early-career/work-experience
- www.allaboutcareers.com/careers-advice/work-experience/engineering-work-experience
- www.targetjobs.co.uk/career-sectors/engineering/282911-engineering-work-experience-a-beginners-guide
- www.ratenyplacement.co.uk/engineering

LSBU | GROUP



ENGINEERING



The Need for Engineering Roles

With Engineering shaping our entire physical world, it's no surprise that there are a huge number of careers open to you. No matter where your passion or interest lies, as long as you possess ambition and the right qualities, you're sure to find an Engineering role to perfectly suit you.

The UK has approx **729,000** engineering businesses
According to research by the Royal Academy of Engineering.

Engineering Economy Employs **6.4M** people London - over **130,000** engineering businesses - **1M** people in engineering roles

At least **59,000** New engineers needed every year to meet demand across sectors, and up to **1 million** additional engineers by 2030.

London-based Engineering alone generates more than **£120bn** GVA for the capital annually.



An Introduction to Engineering

Engineering is the backbone of global industry—powering everything we use, see, and rely on. From transport networks to digital technologies, this fast-paced and innovative sector drives progress and shapes the modern world.

The demand for skilled engineers is constant. Employers seek professionals who are qualified, adaptable, and passionate about solving real-world challenges. Engineers design, build, and improve systems and products that benefit society—from the kettle that makes your morning coffee to the smartphone in your pocket, the car you drive, and the machines that package your food. None of these would exist without engineering expertise.



A key part of my journey was my placement year in the engine manufacturing industry, where I worked as a design and analysis engineer on real projects, including alternative fuels and structural analysis. That experience gave me valuable insight into how the industry works and helped me decide on my next academic step. With the support and encouragement from lecturers, I felt confident applying to further study and pursuing my goals.

Mina S
BEng (Hons) Mechanical Engineering
LSBU



Is Engineering the right Pathway for you?

Gaining the right qualifications and practical experience will give you the technical knowledge needed for this sector, but success in engineering also depends on personal qualities and transferable skills. You'll need strong verbal and written communication skills, a solid understanding of engineering science, technology and physics, and confidence with IT systems and software. Good numeracy and maths skills, attention to detail, and analytical thinking are essential, as is creativity for solving complex problems and finding innovative solutions. Practical ability, confidence in using and maintaining tools and machinery, and the capacity to work both independently and as part of a team will help you thrive in this fast-paced industry.



Careers in Engineering

Engineering is at the heart of modern industry, driving innovation and shaping the world we live in. From transport networks and energy systems to healthcare and digital technologies, engineers design, build, and improve the products and infrastructure that society depends on every day.

The UK engineering economy employs around 6.4 million people, representing nearly 19% of the workforce, and contributes over £690 billion in GVA to the economy. Demand for skilled engineers remains high, with forecasts indicating the need for 59,000 new engineers annually and up to 1 million additional professionals by 2030 to meet the challenges of sustainability, automation, and advanced manufacturing.

Engineering careers now span traditional sectors such as aerospace, automotive, construction, chemicals, defence, electronics, energy, and rail, as well as emerging fields like artificial intelligence, robotics, renewable energy, smart infrastructure, and data-driven engineering. These areas are transforming industries and creating new opportunities for engineers who can combine technical expertise with digital skills and innovative thinking.

Choosing a career in engineering means entering a field that is highly technical, constantly evolving, and deeply rewarding – with strong job security, competitive salaries, and the chance to make a real impact on society.

The average starting salary for a qualified engineer is

£48,000

That's **62% higher** than the UK's national average!

Did you know?

LSBU Graduates are among the highest earning of all London Modern Universities (LEO 2022)

There are plenty of opportunities open to you. Here are just a few ideas:

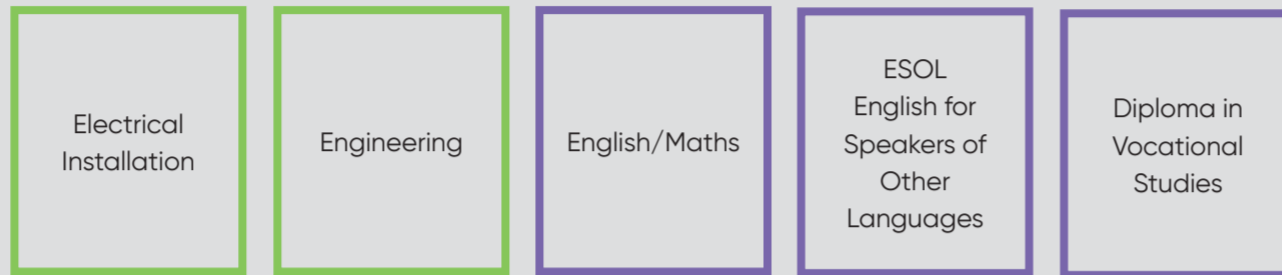
- Aerospace Engineer
- Agricultural Engineer
- Automotive Engineer
- Building Services Engineer
- CAD Technician
- Chemical Engineer
- Civil Engineer
- CNC Machinist
- Design and Development Engineer
- Electrical Engineer
- Electronics Engineer
- Energy Engineer
- Engineering Operative
- Engineering Technician
- Heating and Ventilation Engineer
- Maintenance Fitter
- Manufacturing Engineer
- Marine Engineer
- Materials Technician
- Mechanical Engineer
- Motorsport Engineer
- Robotics Engineer



ENTRY LEVEL
Award, Certificate (ELC), Diploma
English for speakers of Other languages (ESOL)
Essential skills
Functional skills
Skills for Life



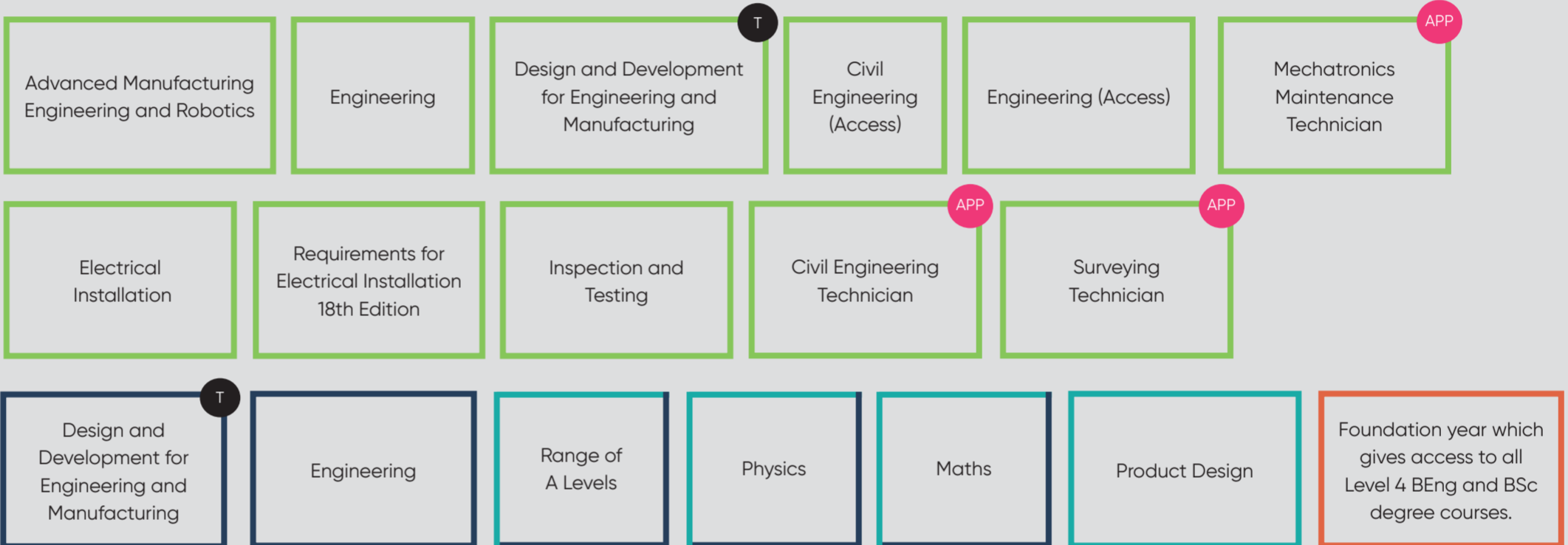
LEVEL 1
First Certificate, Award, Certificate, Diploma, ESOL
Essential skills
Functional skills
National vocational qualification (NVQ)



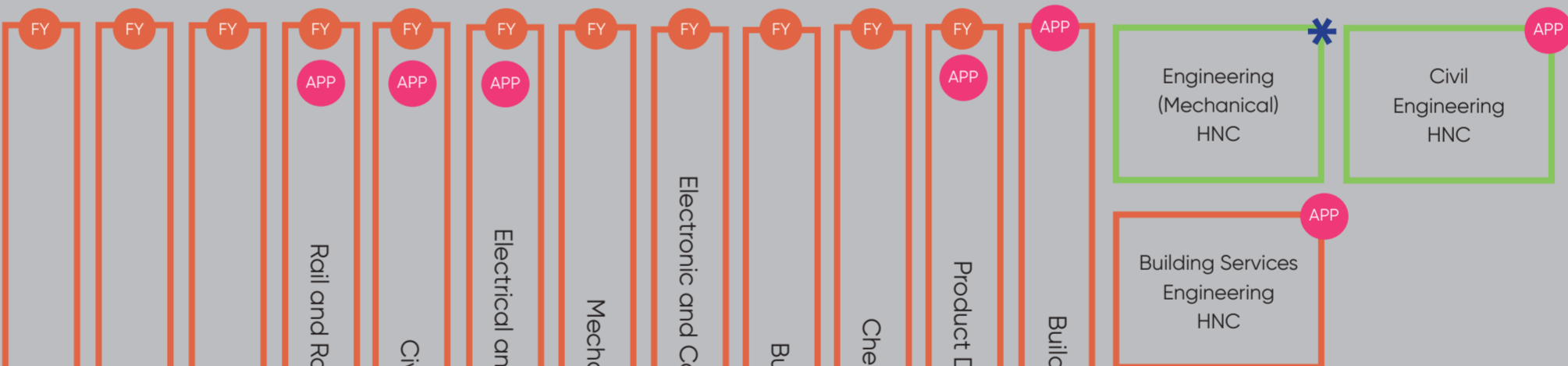
LEVEL 2
Intermediate Apprenticeship, Award, Certificate, Diploma, ESOL
Essential skills
Functional skills
GCSE
NVQ



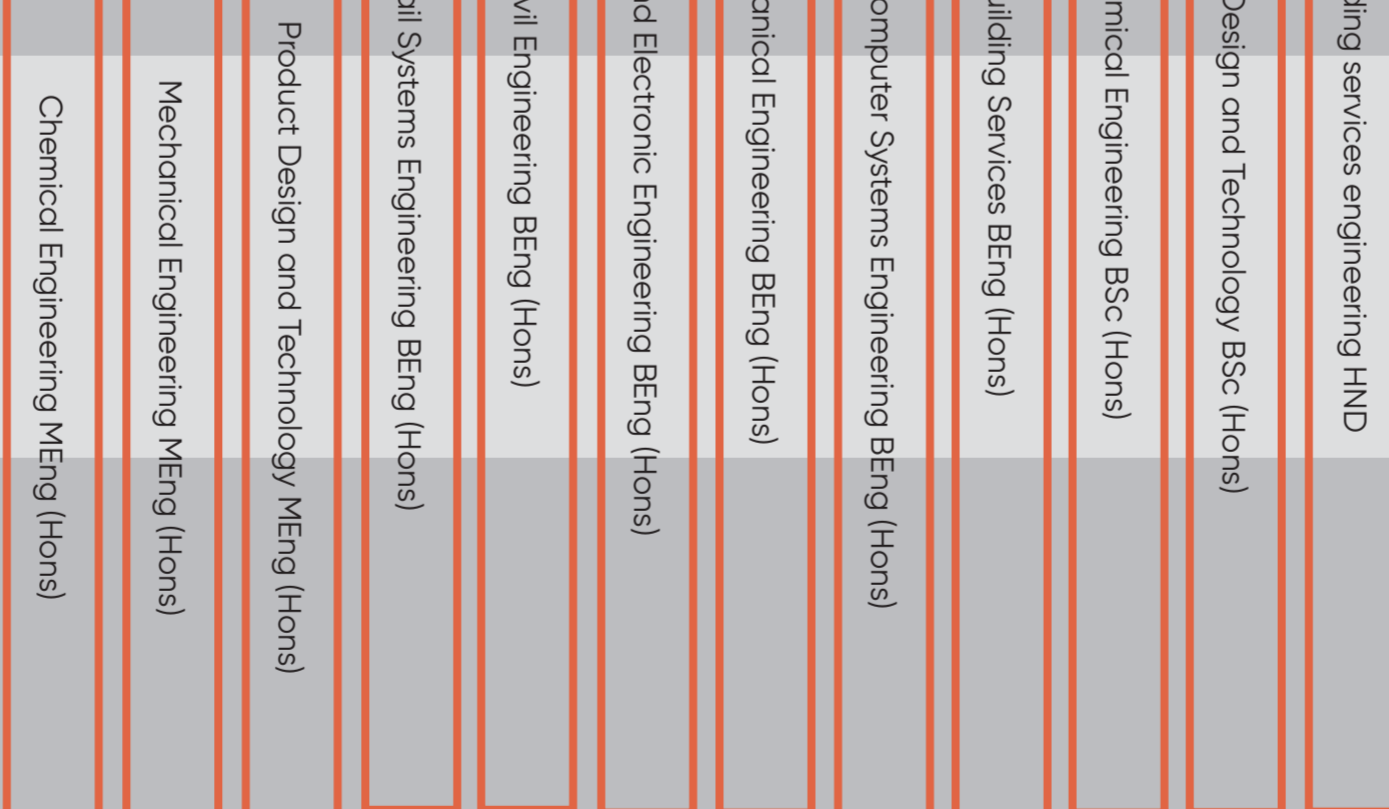
LEVEL 3
Access to HE Diploma
Advanced Apprenticeship
A Level
Applied General
Award, Certificate, Diploma, NVQ
T Level



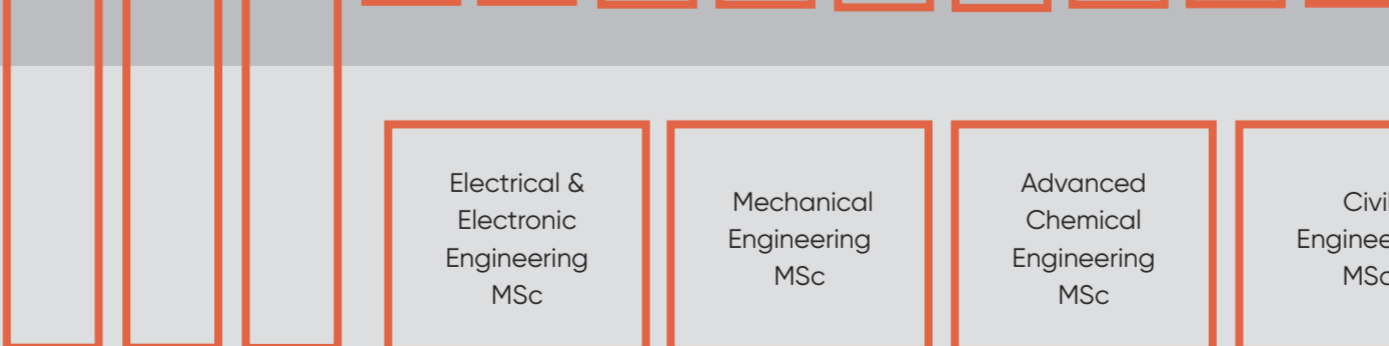
LEVEL 4
CertHE
Higher Apprenticeship
HNC
Award, Certificate, Diploma
NVQ



LEVEL 5
DipHE
Foundation Degree
HND
Award, Certificate, Diploma
NVQ



LEVEL 6
Degree Apprenticeship
Degree (with or without Honours)
Graduate Certificate / Diploma
Award, Certificate, Diploma
NVQ



LEVEL 7
Integrated Master's Degree
Award, Certificate, Diploma, NVQ, Master's Degree
Postgraduate Certificate / Diploma
Postgraduate Certificate in Education (PGCE)



LEVEL 8
Doctorate (PhD or DPhil)
Award, Certificate, Diploma