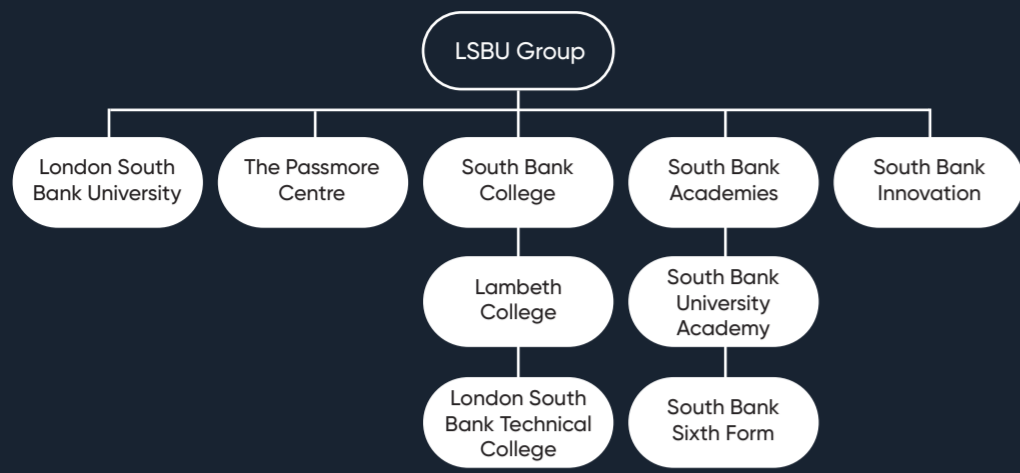


Fit for the future, ready for the real world.

Our goal is to help you succeed, no matter what your age, background, or educational experience. We provide career-focussed pathways across all levels, from Entry to Level 8, providing high-quality education and sector specific learning to prepare you for your life beyond education and qualifications.

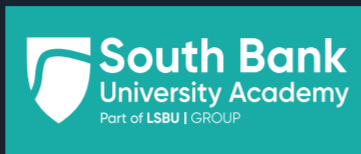


Joining LSBU Group gives our students unrivalled access to educational opportunities, advice and guidance as well as sought-after apprenticeships and work placements. Our students are guaranteed progression to both LSBTC and LSBU*.

Whether your next destination is within LSBU Group or elsewhere, we are one of a handful of providers who offer students the opportunity to progress to one of our new Level 4 one-year courses. Successful completion of this enables our students to fast-track to year 2 of an LSBU degree, saving money as well as providing a standalone qualification that employers recognise should you decide to leave your studies there.

*after successful completion of a Group qualification that has a progression route

Part of **LSBU | GROUP**



Further information about applied science and dental can be found here:

- | | | |
|--|--|---|
| www.careerpilot.org.uk | www.nationalcareers.service.gov.uk | www.startprofile.com |
| www.prospects.ac.uk | www.careersmart.org.uk | Biology: www.rsb.org.uk |
| Chemistry: www.rsc.org | Dentistry: www.bdia.org.uk | Environmental Science: www.the-ies.org |
| Psychology: www.bps.org.uk | Physics: www.iop.org | Physiotherapy: www.csp.org.uk |
| Sport and Exercise: www.bases.org.uk | | Forensic Science: www.csofs.org |

Places on Applied Science and Dental courses, at all levels, are highly sought-after every year. If you believe this is the career pathway for you, but you lack hands-on experience, then we advise you to seek a placement prior to applying.

The following websites are a great place to start:

- | | |
|--|--|
| www.england.nhs.uk/participation/get-involved/volunteering | |
| www.guysandstthomas.nhs.uk/careers/other-types-of-work/volunteering/volunteering.aspx | |
| www.kch.nhs.uk/about/get-involved/volunteering | www.london.gov.uk/what-we-do/volunteering |
| www.southlondoncares.org.uk/get-involved | www.handsonlondon.org.uk |
| www.healthwatchlambeth.org.uk/volunteer | www.britishtscienceassociation.org/volunteer |

LSBU | GROUP



APPLIED SCIENCE AND DENTAL



The Need for Applied Scientists

There has never been a better time to consider entering this rewarding industry. The life sciences directly employ over 268,000 people across the country and consists of over 6,600 businesses. With careers that range from Clinical research to Sport and Exercise Scientists, there are thousands of exciting opportunities within the sector.

Over 6,500 new jobs were published in the table across the life sciences sectors

Vacancy listings in Greater London alone being in excess of 2,400 new jobs

A report by The Board of Trade found that the overall life science sector had an annual turnover of £89 billion

Laboratory roles were the busiest scientific function, with over 1,000 new scientific vacancies.

An Introduction to Applied Science

Applied sciences refer to science subjects that involve applying scientific principles to practical settings. Whereas Pure Science is the research that focuses on theoretical aspects of different topics, Applied Science takes these findings and – through experimentation, testing, and practical application – implements them in a real-world context. A huge and varied number of industries require Applied Scientists, including dentistry, clinical healthcare, disease prevention, engineering, technology, manufacturing, conservation and ecology, professional sports, psychology, physiotherapy, criminology, forensics, energy and pharmaceuticals.



Through my studies, I developed both my academic knowledge and practical laboratory skills, gaining hands-on experience with techniques like PCR, cell culture, and gel electrophoresis. One of the most valuable parts of my experience was my final-year lab project, where I deepened my understanding while collaborating closely with my peers, building both my confidence and teamwork skills..

Krystal R
BSc (Hons) Biomedical Science
LSBU



Is Applied Science and Dental the Right Pathway for You?

If you enjoy all things science, have a passion for problem solving and a great eye for detail- a career in Applied Science could be for you. Science is always evolving so you'll be a lifelong learner, staying up to date on the latest breakthroughs and discoveries.

Applied science is often very hands on and involves practical experiments and working with equipment in laboratories.

Careers in Applied Science

Studying applied science can open a world of job opportunities. From working in labs to being part of research teams, you could be contributing to discoveries and innovations. In the UK STEM related jobs are growing at a rate of around 1.7 times faster than non-STEM jobs.

In 2022, there were approximately 668,000 people employed by the NHS in full-time clinical roles, and many of these medical professionals work in the Applied Sciences; it is estimated that the NHS will require an additional 314,000 full-time staff by 2031 in order to meet the country's needs – meaning there has never been a better time to consider entering this vital and rewarding industry.

The private sector also offers excellent career prospects and job opportunities for the right person. The life sciences as a whole (of which Applied Science is a key part) directly employs 268,000 people across the country (excluding the NHS and public sector), and consists of over 6,600 businesses. When factoring in those employees that are employed in the wider life sciences industry this figure is actually closer to 580,000.

What's more, 50% of all life science jobs are located in London, East of England and the South East – meaning that when you study with LSBU Group, you're already perfectly positioned in the heart of the scientific sector.

Employers, actively seek LSBU Group Applied Science graduates with accredited degrees, as they're a mark of quality assurance and professional relevance.

Our industry connections include The Worshipful Company of Bakers, the London Fire Brigade, Met Police, the NHS, England Rugby and the Rio Ferdinand Foundation.



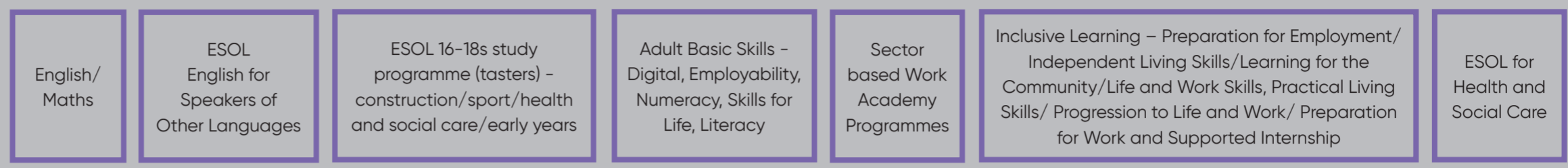
There are plenty of opportunities open to you. Here are just a few ideas:

- Biomedical Scientist
- Chemist
- Chemical Technician
- Clinical Researcher
- Criminologist
- Dental Nurse
- Environmental Scientist
- Field Application or Support Scientist
- Food Scientist
- Forensic Scientist
- Laboratory Analyst
- Laboratory Technician
- Marine Biologist
- Medical Science Liaison (MSL)
- Microbiologist
- Molecular Biologist
- Pharmaceutical Sales and Marketing
- Pharmacologist
- Physiotherapist
- Psychologist
- Radiologic Technologist
- Research Assistant
- Sport and Exercise Scientist
- Sustainability Manager
- Technical Application or Support Scientist
- Technical Sales Specialist

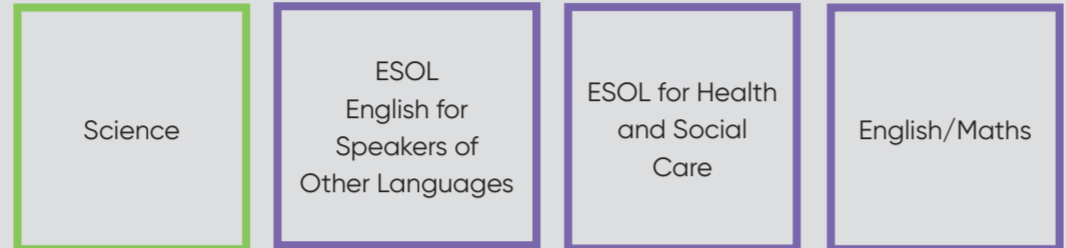
Chemists can earn from £21k to £40k p.a. while Senior Medicinal Chemists can earn up to £80k annually; a Dental Nurse can expect a starting salary of around £22k rising to £33k with experience; Environmental Scientists earn an average of £36k annually, with their pay ranging from £23k to £56k; Forensic Scientist salaries typically start at around £21k while training, increasing to between £25k and £35k with experience, and reaching in excess of £50k p.a. at senior levels; Laboratory Technician starting salaries tend to be around £19k to £22k, rising to £28k with the requisite experience and qualifications, while senior and management technicians can earn in the range of £30k to £40k a year.



ENTRY LEVEL
Award, Certificate (ELC), Diploma
English for speakers of Other languages (ESOL)
Essential skills
Functional skills
Skills for Life



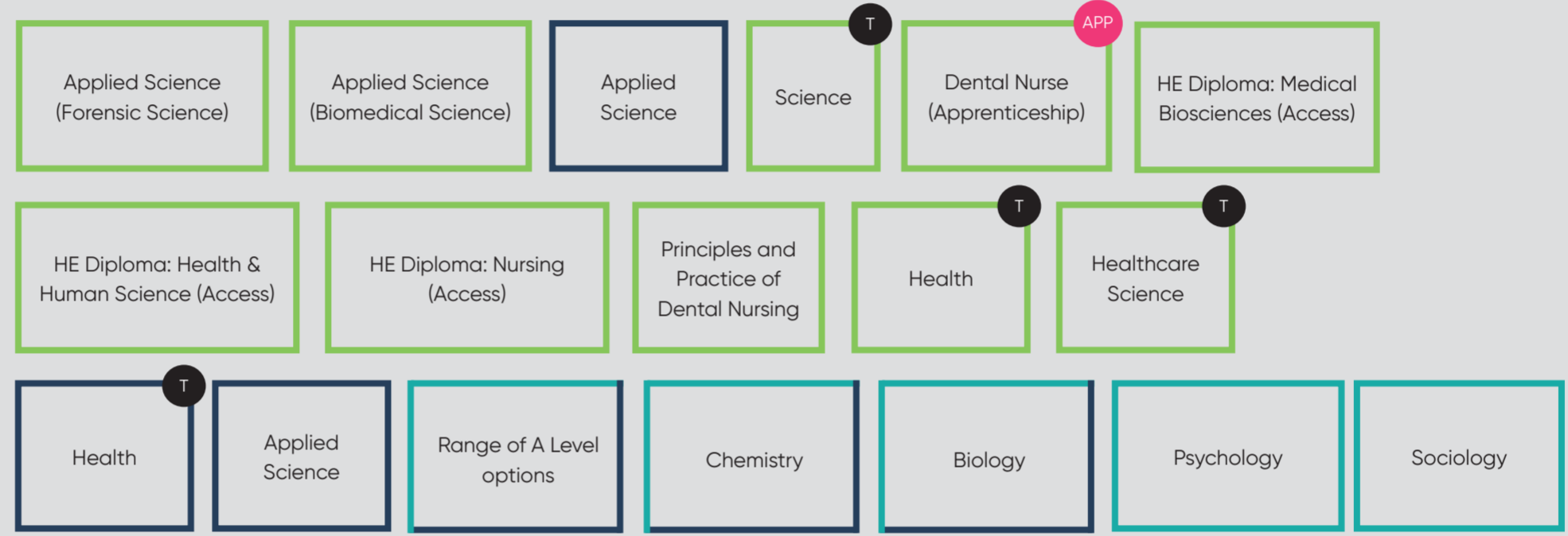
LEVEL 1
First Certificate, Award, Certificate, Diploma, ESOL
Essential skills
Functional skills
National vocational qualification (NVQ)



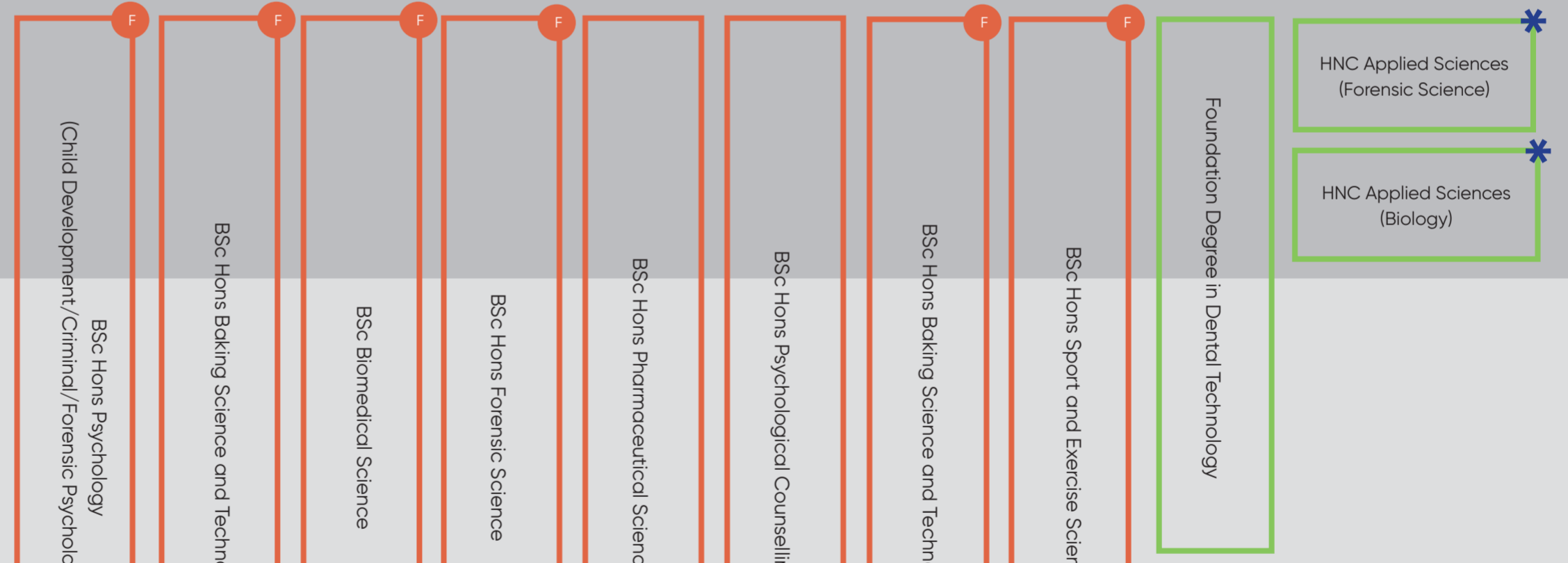
LEVEL 2
Intermediate Apprenticeship, Award, Certificate, Diploma, ESOL
Essential skills
Functional skills
GCSE
NVQ



LEVEL 3
Access to HE Diploma
Advanced Apprenticeship
A Level
Applied General
Award, Certificate, Diploma, ESOL
NVQ
T Level



LEVEL 4
CertHE
Higher Apprenticeship
HNC
Award, Certificate, Diploma
NVQ



LEVEL 5
DipHE
Foundation Degree
HND
Award, Certificate, Diploma
NVQ

LEVEL 6
Degree Apprenticeship
Degree (with or without Honours)
Graduate Certificate/Diploma
Award, Certificate, Diploma
NVQ



LEVEL 7
Integrated Master's Degree
Award, Certificate, Diploma, NVQ, Master's Degree
Postgraduate Certificate / Diploma
Postgraduate Certificate in Education (PGCE)



LEVEL 8
Doctorate (PhD or DPhil)
Award, Certificate, Diploma