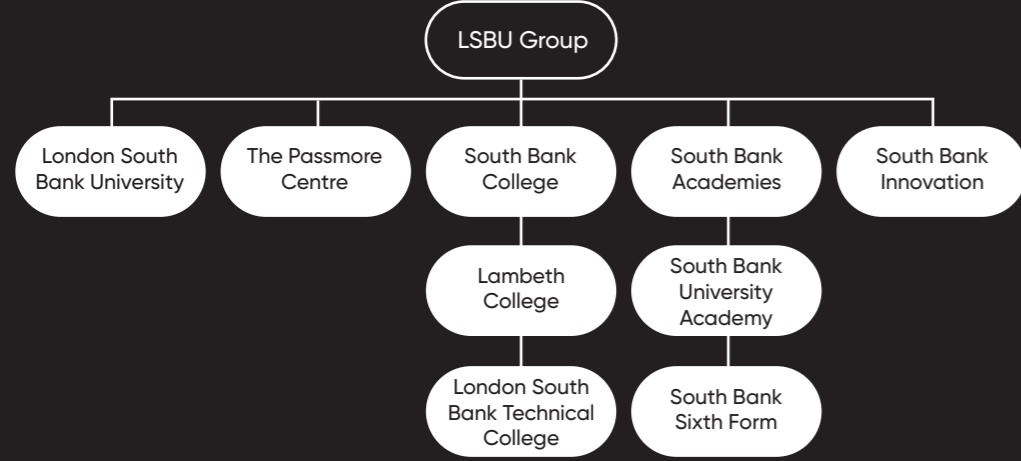


Fit for the future, ready for the real world.

Our goal is to help you succeed, no matter what your age, background, or educational experience. We provide career focussed pathways across all levels, from Entry to Level 8, providing high quality education and sector specific learning to prepare you for your life beyond education and qualifications.



Joining LSBU Group gives our students unrivalled access to educational opportunities, advice and guidance as well as sought-after apprenticeships and work placements. Our students are guaranteed progression to both LSBTC and LSBU*.

Whether your next destination is within LSBU Group or elsewhere, we are one of a handful of providers who offer students the opportunity to progress to one of our new Level 4 one-year courses. Successful completion of this enables our students to fast-track to year 2 of an LSBU degree, saving money as well as providing a standalone, qualification that employers recognise should you decide to leave your studies there.

*after successful completion of a Group qualification that has a progression route

Further information about careers in Engineering, can be found here:

- www.careerpilot.org.uk
- www.startprofile.com
- www.prospects.ac.uk
- <https://nationalcareers.service.gov.uk>



Places on Engineering courses, at all levels, are highly sought-after every year. If you believe this is the career pathway for you, but you lack hands-on experience, then we advise you to seek a work experience placement prior to applying.

The following websites are a great place to start:

- www.theiet.org/career/career-support/early-career/work-experience
- www.allaboutcareers.com/careers-advice/work-experience/engineering-work-experience
- www.targetjobs.co.uk/career-sectors/engineering/282911-engineering-work-experience-a-beginners-guide
- www.ratemypacement.co.uk/engineering



The Need for Engineering Roles

With Engineering shaping our entire physical world, it's no surprise that there are a huge number of careers open to you. No matter where your passion or interest lies, as long as you possess ambition and the right qualities, you're sure to find an Engineering role to perfectly suit you.

The UK has circa 730,000 engineering businesses

According to research by the Royal Academy of Engineering.

Engineering Economy Employs 8.1m people

London - over 132,000 engineering businesses - 1.1m people in engineering roles

265,000 engineers needed by 2024

London-based Engineering alone generates more than £126bn GVA for the capital annually.

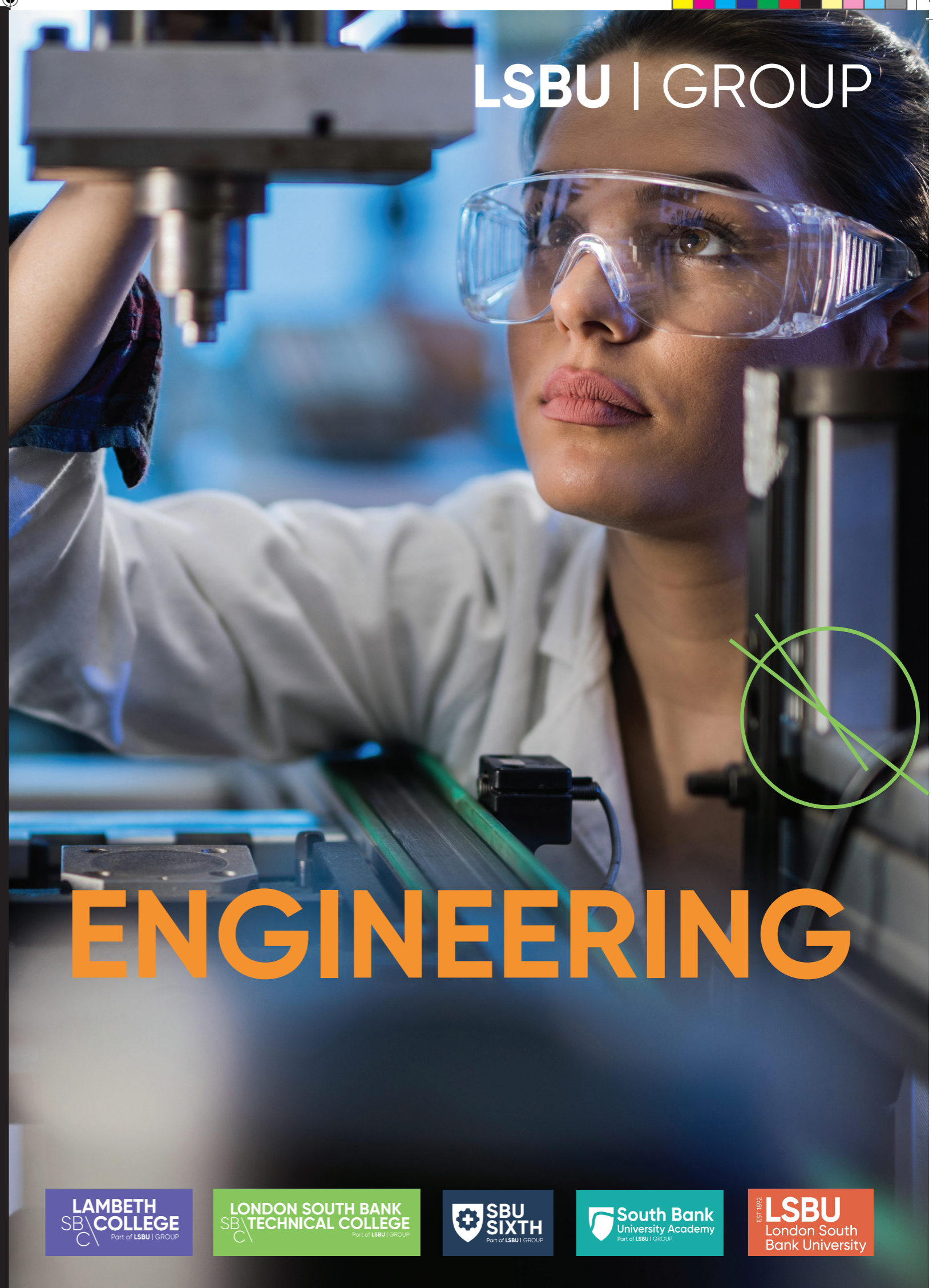
An Introduction to Engineering

Engineering is at the very heart of global industry; this fast-paced and innovative industry is behind everything you use, everything you see, and everywhere you go. Because of this, the world constantly needs an Engineering workforce that is qualified, well-trained, passionate and dedicated.

Engineers shape the world around us by designing and creating objects, developing systems, and solving problems for the benefit of society. From the kettle you use to make your morning coffee, to the mobile phone in your pocket, to the car you use to drive to the shops, to the machines used to package the food you buy there; none of those things would exist without the skills and expertise of engineers.



APPLY NOW



LSBU | GROUP

ENGINEERING

-
-
-
-
-

Is Engineering the right Pathway for you?

Gaining the necessary qualifications, and undertaking relevant work experience, can teach you the knowledge and expertise you will need in this sector, but there are a number of personal qualities and transferrable skills that are essential for a successful career in Engineering.

You'll need excellent verbal and written communication skills; have a sound knowledge of engineering science, technology, and physics; possess good IT skills and be confident in the use of computer systems, hand-held devices and software packages; possess strong numeracy and maths skills; be thorough in your work and always pay attention to detail; have good design and analytical thinking skills; be good at working with your hands; be confident in the use and maintenance of machinery and tools; possess complex problem solving skills; have the ability to work as both part of a team and under your own initiative; and have the ability to come up with new and innovative ways of doing things, and finding solutions to problems.

"We are developing brand new engineering courses in partnership with industry leaders"
Wayne Wright,
Principal LSBTC

Careers in Engineering

The UK's 'Engineering Economy' currently employs 8.1 million people - this is over a quarter of all UK workers (26%) - and Engineering in London alone has over 132,000 Engineering businesses and employs nearly 1.1 million people in Engineering jobs. It's been forecast that the sector will need to recruit a minimum of 265,000 skilled entrants annually - in order to meet this huge demand for Engineering enterprises - by the end of 2024.

If you choose to apply your skills and attributes to meeting this need, then a highly-technical, highlyengaging, everchanging, hugely-interesting, and potentially lucrative career awaits.

Qualified Engineers and well-trained engineering Fitters, Technicians, Operatives and Machinists are required in just about every industry you can think of; some of the key engineering industries are Aeronautical, Agricultural, Automotive, Construction, Chemicals, Defence, Electronics, Energy, Fast-Moving Consumer Goods (FMCG), Highways, Marine, Materials and Metals, Pharmaceuticals, Rail, Telecoms, and Utilities (covering water, sewerage, energy and telecoms).

Just taking the Rail industry as an example, Mechanical Engineers are required to work on the trains and tracks; Electrical Engineers are needed for the power distribution to the stations, the tracks, and in the trains themselves; Electronic Engineers are needed to design, install and maintain the signalling systems; and Civil Engineers are responsibly for designing, building, maintaining and repairing the tracks, bridges and stations.

The average starting salary for a qualified engineer is

£48,000

That's 62% higher than the UK's national average!

Did you know?

LSBU Graduates are among the highest earning of all London Modern Universities (LEO 2022)

There are plenty of opportunities open to you. Here are just a few ideas:

- Aerospace Engineer
- Energy Engineer
- Agricultural Engineer
- Engineering Operative
- Automotive Engineer
- Engineering Technician
- Building Services Engineer
- Heating and Ventilation Engineer
- CAD Technician
- Maintenance Fitter
- Chemical Engineer
- Manufacturing Engineer
- Civil Engineer
- Marine Engineer
- CNC Machinist
- Materials Technician
- Design and Development Engineer
- Mechanical Engineer
- Electrical Engineer
- Motorsport Engineer
- Electronics Engineer
- Robotics Engineer

ENGINEERING



London South Bank University



London South Bank Technical College



Lambeth College



South Bank University
Sixth Form



South Bank University Academy

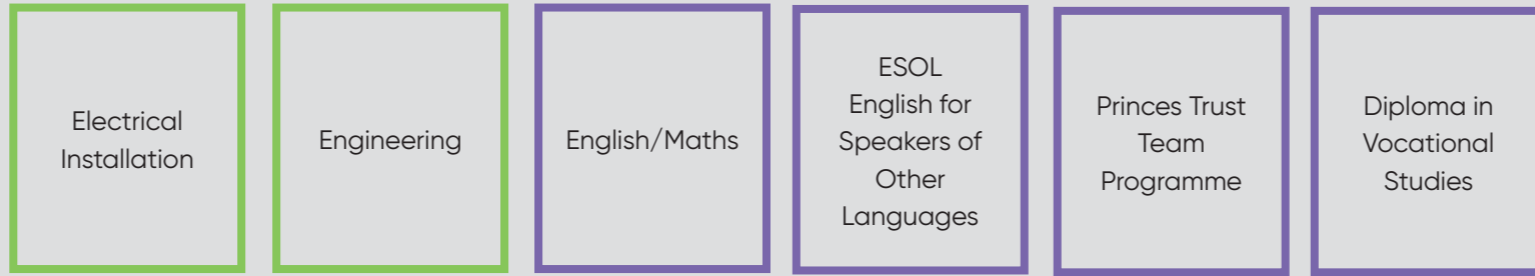
ENTRY LEVEL

Award, Certificate (ELC), Diploma
English for speakers of other languages (ESOL)
Essential skills
Functional skills
Skills for Life



LEVEL 1

First Certificate, Award, Certificate, Diploma, ESOL
Essential skills
Functional skills
National vocational qualification (NVQ)



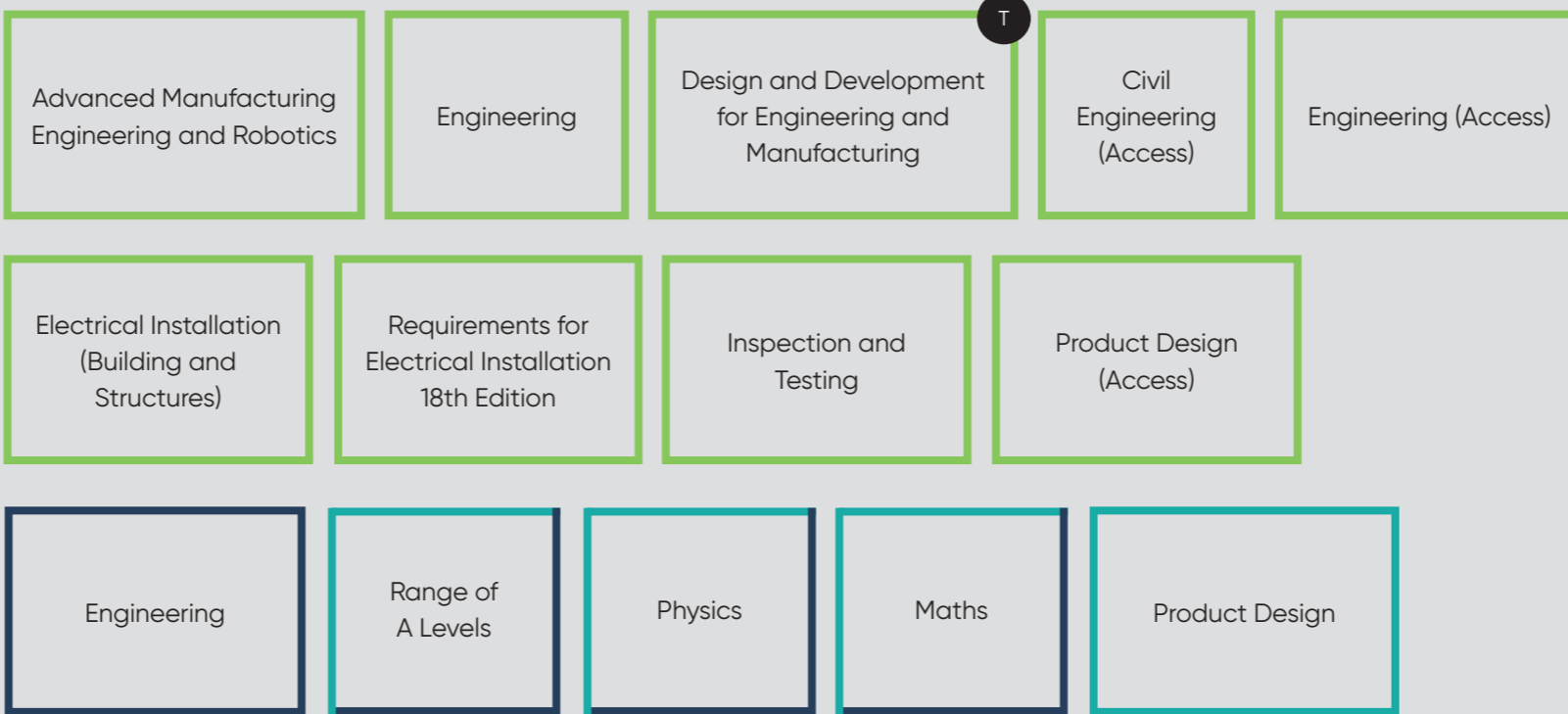
LEVEL 2

Intermediate Apprenticeship, Award, Certificate, Diploma, ESOL
Essential skills
Functional skills
GCSE
NVQ



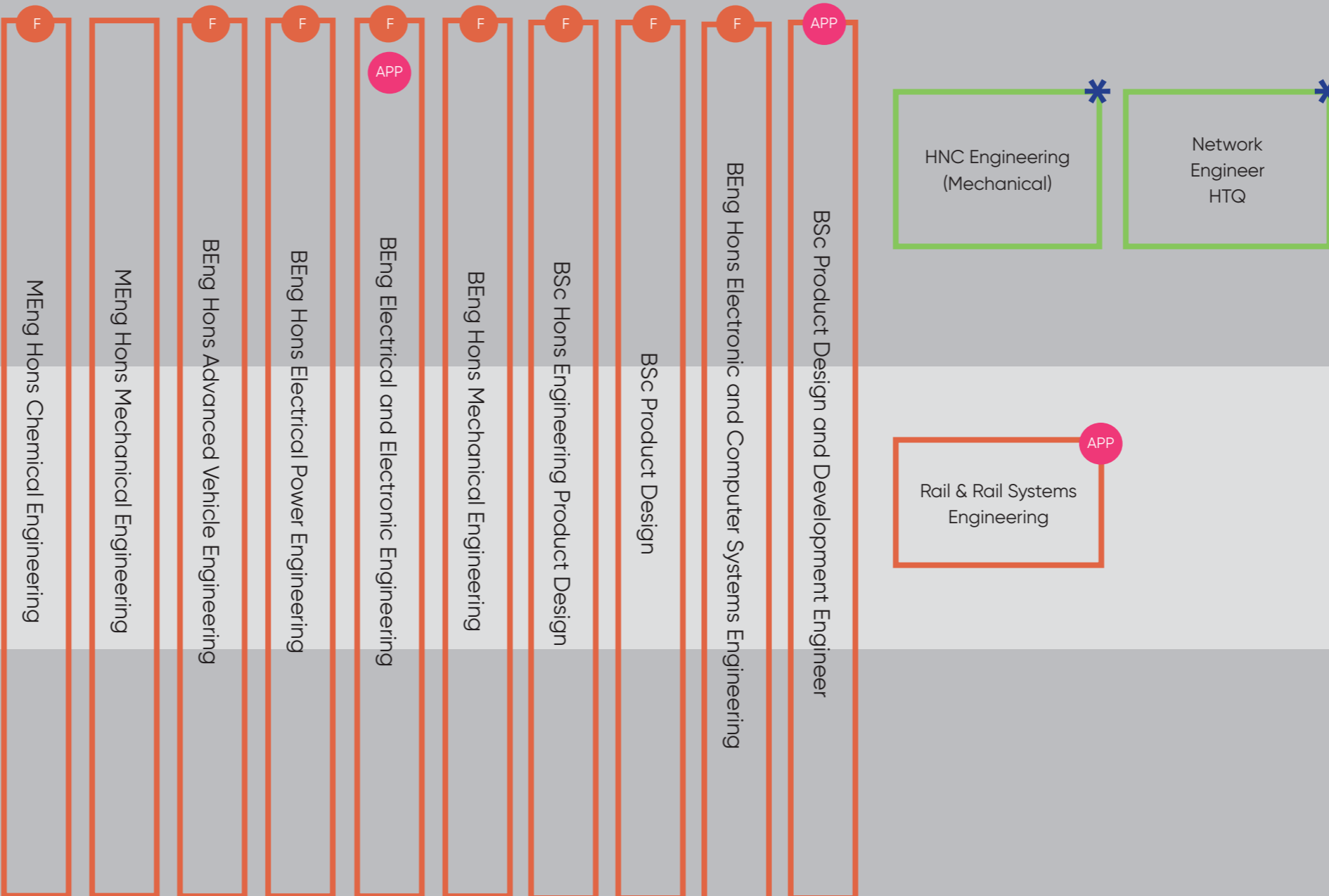
LEVEL 3

Access to HE Diploma
Advanced Apprenticeship
A Level
Applied General
Award, Certificate, Diploma, ESOL
NVQ
T Level



LEVEL 4

CertHE
Higher Apprenticeship
HNC
Award, Certificate, Diploma
NVQ



LEVEL 5

DipHE
Foundation Degree
HND
Award, Certificate, Diploma
NVQ

LEVEL 6

Degree Apprenticeship
Degree (with or without Honours)
Graduate Certificate / Diploma
Award, Certificate, Diploma
NVQ

LEVEL 7

Integrated Master's Degree
Award, Certificate, Diploma, NVQ, Master's Degree
Postgraduate Certificate / Diploma
Postgraduate Certificate in Education (PGCE)



LEVEL 8

Doctorate (PhD or DPhil)
Award, Certificate, Diploma



T T Level, includes 45-day industry placement * Direct yr2 entry on to LSBU degree programme on successful completion APP Apprenticeship F Foundation year available