



**SBU
SIXTH**

Part of **LSBU** | GROUP



**CREATE
YOUR
FUTURE**

16-19 SIXTH FORM

ENGINEERING + HEALTH + BUSINESS & FINANCE

APPLY TODAY

WWW.SBUSIXTH.AC.UK

SOUTHBANK UNIVERSITY SIXTH FORM

Welcome to South Bank University Sixth Form (SBUSixth), where we will provide you with the perfect platform from which to launch your future career. Delivering a unique blend of innovative and industry-focused education, taught in state-of-the-art facilities. We are here to maximise your talent, develop your skills and understanding, and turn your ambitions into reality.



"At SBUSixth we have collaborated with our LSBU Group partners and both local and national employers to supercharge your educational experience. Our close-knit sixth form serves as your launchpad to success. We offer additional work skills qualifications, work experience opportunities, and personalised career advice alongside exciting clubs, activities, and societies."

Principal David Bell
South Bank University Sixth Form



Open Events

"As the Vice Chancellor of London South Bank University, I am proud to see the progress and achievements of our students at SBUSixth. I look forward to welcoming you to the LSBU Group and showing you the opportunities and experiences that await you here."

ESTD 1892 **LSBU** Prof. David Phoenix OBE, Vice-Chancellor
London South Bank University

www.sbusixth.ac.uk | 56 Brixton Hill, SW2 1QS

CONTENTS

Page 4	Our Mission
Page 5	Our Values
Pages 6-7	Part of the LSBU Group
Pages 8-9	Our Employer Partners
Pages 10-11	Industry Placements and Mentoring
Pages 12-13	Support and Wellbeing
Page 14-15	Our Facilities and Resources
Page 17	Education for All: Financial Aid
Page 18	Admissions and Applications
Page 19	Success Stories
Page 20	Pathways and Courses
Page 21	A-Levels, T-Levels and BTECS Explained
Pages 22-23	Health
Pages 24-25	Engineering
Page 26-27	Business and Finance
Pages 28-29	A-Levels: A Pathway to Success
Page 31	How to Apply

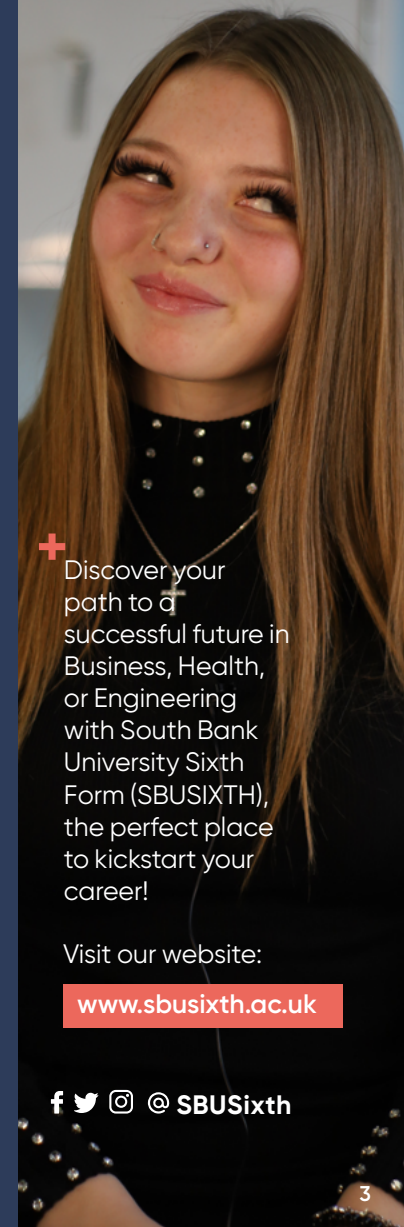


SBUSixth, 56 Brixton Hill, London SW2 1QS

Have questions?

We can help. Message us to speak with our team.

020 7738 6115 | 07586076634
marketing@sbusixth.ac.uk



+ Discover your path to a successful future in Business, Health, or Engineering with South Bank University Sixth Form (SBUSIXTH), the perfect place to kickstart your career!

Visit our website:

www.sbusixth.ac.uk

@SBUSixth



OUR MISSION

At SBUSixth, we are on a mission to provide a unique and innovative approach to post-16 education. We deliver career-focused, industry-led, technical education in Engineering, Health, and Business and Finance; our school environment aims to give you a head start in high-demand employment sectors across London and beyond.

By keeping our class sizes small, and our teaching focused, we provide a truly nurturing learning environment for young people aged 16-19, and our expert faculty is here to support you every step of the way. We believe in applied education, so as an SBUSixth student, you won't just learn about technical skills in a classroom, you will engage with, and work alongside, leading employers in your chosen industry through

valuable work experience and placements. We don't believe in a one-size-fits-all approach to education, and our unique personalised support programme is tailored to meet the specific needs of each and every student; including high-quality educational support services and enrichment activities. Plus, our small class sizes ensure that each student receives the focused attention they need to succeed.

SBUSixth is part of the esteemed LSBU Group, which means you will have unrivalled access to further and higher educational opportunities, advice and guidance, and sought-after apprenticeship placements. What's more, all of our successful students are guaranteed progression to both London South Bank Technical College (LSBTC) and LSBU.



OUR VALUES



INNOVATION

Creativity, Problem Solving, Can-do Approach.

Innovation drives our teaching and learning, promoting creativity and problem-solving to prepare students for their future careers.



INTEGRITY

Professionalism, Honesty, Tolerance.

Integrity guides our professional conduct and inspires trust in our work and the character of our students.



INTENT

Ambition, Excellence, Purpose, Outcome-focused.

Intent propels us towards excellence, empowering us to perform at our highest level and surpass our expectations.

Our position within the LSBU Group, combined with our state-of-the-art facilities, access to the latest technologies, industry-led curriculum, expert faculty, small class sizes, outstanding care and guidance, and personalised support programme, are all perfectly designed to maximise your opportunities and ensure you reach your full potential; not just as a future industry professional, but as a positive citizen as well.

So, join us and experience the difference at South Bank University Sixth Form. You bring your ambition, and we'll provide you with the opportunity to shape your perfect future.

Learn more at sbusixth.ac.uk



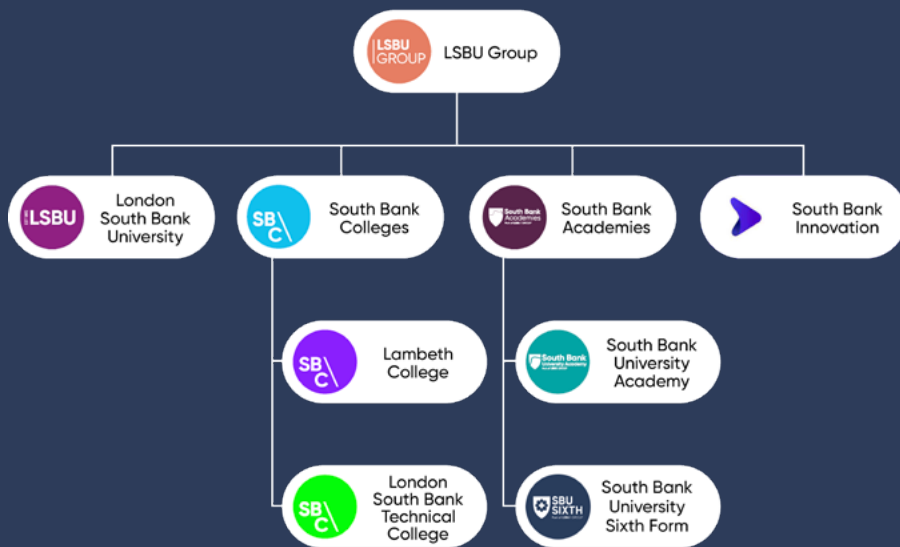
LSBU

PART OF LSBU GROUP

EST 1892
LSBU



LSBU Ranked 90th
Worldwide Scan to learn more



When you enrol at SBUSixth, you're joining far more than a traditional sixth form college; you are becoming part of a unique, respected, innovative, and inclusive family of education providers. We can provide you with a clear and complete learning pathway throughout your further and higher education journey, including apprenticeships and degrees – and all based right in the heart of south London.

As part of LSBU Group – headlined by London South Bank University (LSBU) – you will have access to highly sought-after opportunities, cutting-edge facilities and resources, world-class teaching, and personalised support, that will set you apart from the rest and truly prepare you for a successful and rewarding future. Through our collaboration with LSBU, we are able to tailor our curriculum to specifically prepare you for your chosen career.

As a vibrant, diverse, inclusive and forward-thinking university, LSBU has an unwavering commitment to not only providing high-quality education and industry-specific learning, but to also prepare you for life beyond education and professional qualifications. Our position within LSBU

Group will afford you opportunities not otherwise available, including the chance to take part in applied, accredited courses with placement opportunities in a wide and varied array of subjects including Engineering, Nursing, Law, Film and Media, Education, and Business.

When you join SBUSixth and become part of the LSBU Group family, you will have access to our guaranteed progression (following successful completion of your course and support package), as well as the Pre-U project, SBC Level 4 Progression, and University Transition programme. This will provide you with an enriched learning experience that closely resembles – and prepares you for – higher education.

South Bank University Sixth Form operates as part of South Bank Academies Trust, sponsored by London South Bank University and part of LSBU Group.



LSBU Group includes London South Bank University, South Bank Colleges, South Bank Academies Trust, South Bank University Sixth Form, South Bank University Academy and South Bank University Enterprises Ltd.

OUR EMPLOYER PARTNERS

A key reason why we are so perfectly positioned to provide such exceptional real-world relevant, employment-focused education lies in our long-standing and immensely strong partnerships with leading employers and professional organisations in the Engineering, Health, and Business and Finance sectors.

Not only do these partnerships offer you unrivalled access to experiences and opportunities that will prepare you for a successful career, but our curriculums are designed in collaboration with our professional partners; meaning they teach you the precise knowledge and skills that employers are actively seeking.

One of our key employer partners is the construction and infrastructure development giant Skanska UK – with a global workforce of over 57,000 employees – through whom our Engineering students can access employment-focused projects, targeted apprenticeship advice, one-to-one CV workshops, and even a 'Takeover Day' where over 50 Skanska employees guide your learning.

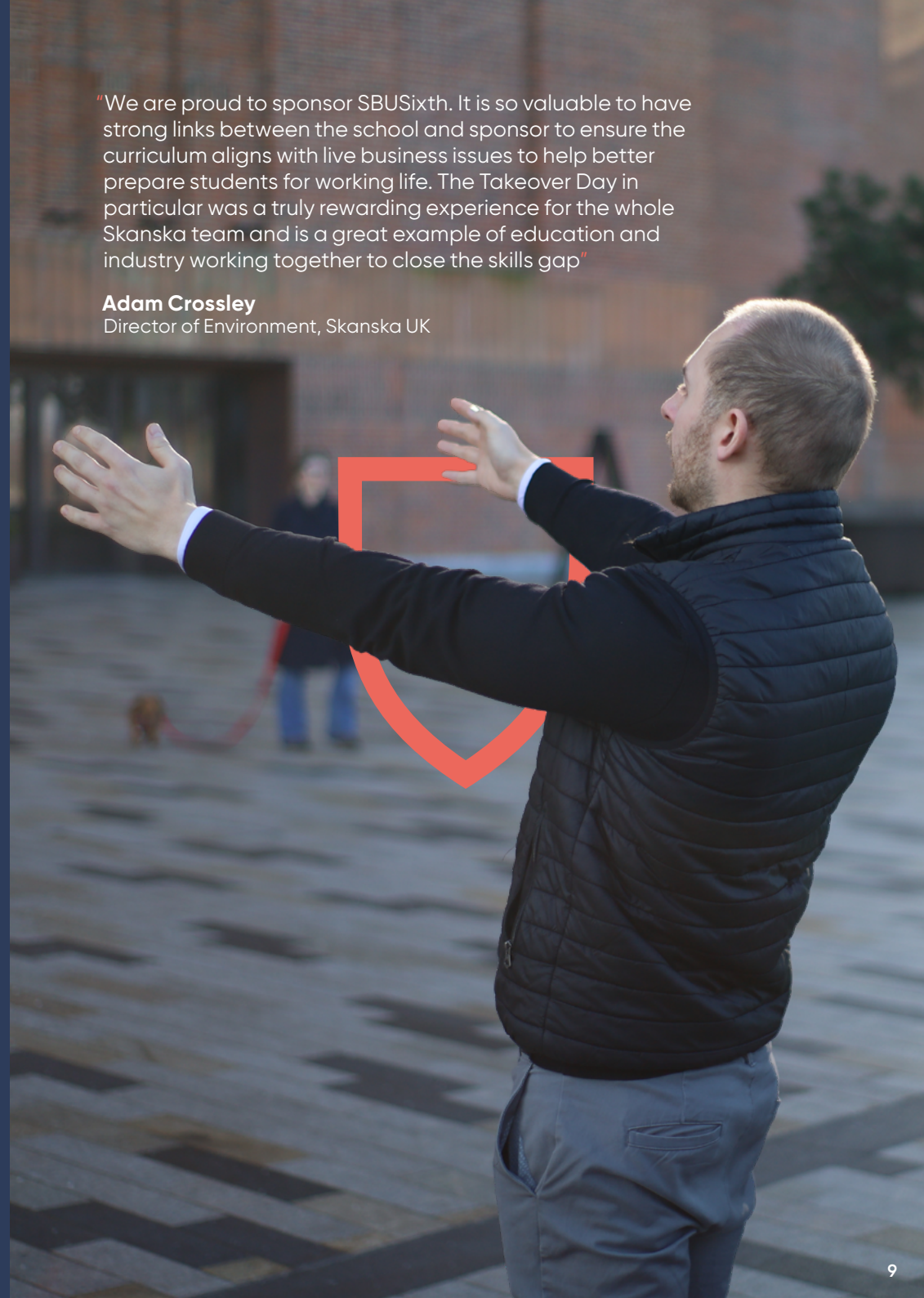
If a career in the health sector is what drives you, then we count Guy's and St Thomas' NHS Foundation Trust – one of the country's largest hospital trusts with a reputation for medical progress and innovation – and King's College NHS Foundation Trust – a world-class hospital at the heart of the South London community, with a reputation for clinical excellence and world-leading research – as partners.

These partnerships provide you with access to their cutting-edge facilities, expert guest lectures, valuable opportunities for work experience, and vocation-focused curriculum projects. In fact, our entire Health curriculum has been designed in collaboration with the Trusts to ensure you develop the sector-specific knowledge, skills and understanding required to achieve your career goals.

When you join us at SBUSixth, you will gain real-world learning experiences, industry-relevant knowledge, and valuable networking opportunities with some of the most respected and successful companies in the country; providing you with a unique advantage in your journey towards your chosen career, and making you highly sought-after by future employers.

"We are proud to sponsor SBUSixth. It is so valuable to have strong links between the school and sponsor to ensure the curriculum aligns with live business issues to help better prepare students for working life. The Takeover Day in particular was a truly rewarding experience for the whole Skanska team and is a great example of education and industry working together to close the skills gap"

Adam Crossley
Director of Environment, Skanska UK



Brands we work with



overbury

INDUSTRY PLACEMENTS AND MENTORING

"My industry placement with Skanska UK was an amazing experience. I worked on real projects and learned from experienced engineers. It really helped me decide that I wanted to pursue a career in engineering"

Tariq M
SBUSixth Engineering student

"The mentoring program at the sixth form was a game changer for me. My mentor was a successful healthcare professional who provided me with valuable guidance and support as I navigated my career"

Iga D
Former SBUSixth Engineering Student

Industry Placements and Mentoring

As part of our firm commitment to not only providing you with accredited professional qualifications, but also to fully-prepare you for your real-life work environment, at SBUSixth we pride ourselves on our industry placements and mentoring programmes. These programmes enable you to gain hands-on experience, develop industry-specific skills, and make valuable networking connections within your chosen sector.

Placements +

If you are following an Engineering career pathway, you will have the opportunity to experience professional placements with globally-renowned companies such as Skanska UK; where you will gain valuable experience working on real-world projects, and gain an array of skills and practical knowledge, that you couldn't achieve in the classroom alone.

Equally, as a Health student, you will get to enjoy professional placements with leading healthcare organisations such as Guy's and St Thomas' and Kings College NHS Foundation Trusts. Here you will have the opportunity to observe and assist healthcare professionals in their day-to-day work, giving you a much deeper understanding of the healthcare industry, and the skills and personal qualities you need to succeed.

Mentoring +

However, at SBUSixth we go much further than just industry placements alone, as we also offer you the chance to experience our expert mentoring programmes. On these programmes you will be paired with experienced professionals and industry experts – people who have already followed the pathway you're embarking on – who'll provide you with help, advice, insights and support, and guide you as you navigate along your chosen career pathway.



Find out how Iga secured a degree apprenticeship with Skanska.

SUPPORT AND WELLBEING



SBUSixth has created a nurturing, supportive, diverse, and inclusive learning environment for all our students, and when you enrol with us, we don't just focus on your academic success, we also place great importance on your mental and personal wellbeing.

We have a dedicated and compassionate pastoral team that works to build a strong, positive relationship with you and your parent(s) or guardian(s). They understand that you are an individual and no two students share the same personal journey, and strive to ensure that your time with us here will be happy, healthy, successful, and extremely positive.

You will also be assigned a Professional Development Coach who will lead a weekly session with you and your tutor group each week – who will work closely with you to ensure you have the support you need to succeed academically, emotionally, and socially. Your Professional Development Coach will also be your parent or guardian's first point of contact.



Our commitment to providing high-quality personalised care, that supports both your educational and personal development, includes Social, Moral, Spiritual, and Cultural (SMSC) support, personal development, careers guidance, work-related learning, sex and relationships education, and religious studies.



We also have a zero-tolerance policy towards bullying and provide a confidential reporting system for all students. Everybody at SBUSixth has a voice, and every voice is valued.



As an employment-focused Sixth Form, we provide you with an exceptional range of support and guidance services, as you explore your progression options; be it university, an apprenticeship, or direct to employment.



Our staff have vast experience and expertise across a wide range of industries, and access to a huge external network of employers and educators, and use this to provide you with a bespoke individual support plan to guide you along your journey to your chosen career. You will receive evidence-informed advice and guidance on a wide range of educational and professional pathways, including those within and beyond the LSBU Group.



You will also benefit from personalised individual support, enrichment activities, employer-led projects, and a guaranteed two-week work experience programme every July.



It is this level of personal support, combined with our dedicated commitment to learning and outstanding facilities, that led to 51% of our students last year going to their first-choice university, and a further 27% of our students securing a highly sought-after degree or professional apprenticeship.

OUR FACILITIES AND RESOURCES

SBUSixth has been purpose-built to not only maximise your potential and enrich your mind, but to ensure your body stays healthy too.

Our state-of-the-art building has been designed with the consultation of industry experts to ensure it's the perfect environment for technical education; provides you industry-standard labs, workshops and equipment; is equipped with cutting-edge IT; and offers a wide range of specialised facilities.

SBUSixth Facilities:

- + Fully-equipped Gym (as well as free gym membership at the LSBU Academy of Sport)
- + 3D Print Farm 25+ 3D Printers & CNC Room
- + 270° Virtual Reality and Simulated Health Suite
- + Carbon Fibre Manufacturing Room
- + Engineering workshops, featuring CNC Machines, 3D Printers, Plasma Cutters, Laser Cutters, Textile Printers, Metal Printers and much more
- + High-tech IT and Computing Equipment
- + CAD Suites with Dual Monitors
- + Flight and Racing Simulators
- + Optimal Study Spaces for Independent Learning and Support

LSBU Group Facilities:

- + New, world-class learning hub and library
- + Business Incubator
- + Sport and Fitness Centre
- + Industry-standard Labs and Workshops
- + Specialist Facilities for Engineering, Business, and Health
- + Study Spaces
- + Digital Engineering Facilities
- + Virtual Reality and Gaming Technology
- + Robotics and 3D printing
- + Computer Engineering and Design

As an SBUSixth student, you will have access to a number of professional-level sports and gym facilities. And as if that wasn't enough, you will also be able to take advantage of numerous LSBU Group facilities; providing you with everything you need to optimise both your mental and physical development.



Cutting-Edge Computing and Digital Technologies +

You will work with the latest digital technologies, and learn to operate the preferred IT equipment of your chosen industry. You will have the opportunity to think, design, and analyse in a digital environment, and access gaming technology, 360-degree video, flight & racing simulators virtual reality, robotics, 3D printing, and Computer Aided Design (depending on your course)

Specialist Science, Engineering, and Health Facilities +

We have invested heavily in our engineering labs and workshops, digital engineering facilities, and modern science labs, and they are expertly designed and fully-equipped with industry-standard tools and apparatus. In addition, our health facilities are equipped with professional-level equipment and high-tech simulated health facilities. We never stop striving to create the perfect learning environment, and we are also set to open a new Health Tech facility on site in 2023.

Professional Business and Finance Facilities +

The world of Business and Finance is driven by technology, and when you study at SBUSixth you will be taught to master a suite of specialist software – the same software that the industry professionals use – and have access to the latest, cutting-edge, IT equipment and technology. You will also benefit from our extensive network of business employer partners; giving you a head-start in your quest for a successful and dynamic career.



Results Day

Principal David Bell & Graduate Micah

EDUCATION FOR ALL: FINANCIAL AID

We do not believe that financial circumstances should be a barrier to your education. That's why we offer a range of financial aid options to help support you, should you need it.

If you have any questions about financial aid or need additional support, please do not hesitate to contact us; our pastoral team is always on-hand to provide help, advice or guidance.



Free Meals

If you are eligible for free school meals – according to the Government's criteria – you can apply to receive them while you are studying at SBUSixth.



Bursaries

Should you experience financial hardship whilst studying at SBUSixth, you may be entitled to a support bursary (assessed on your individual circumstances) to help with costs such as transport, uniforms, and course-required equipment.



Student Discounts

Upon enrolment you will be entitled to a range of student discount cards and savings' programmes, such as the NUS TOTUM card and UNiDAYS. These discounts can be used on a variety of products and services, including clothing, food, travel, and much more.

On Running Competition

AVP Jenna Wilkinson & Maripaz



ADMISSIONS AND APPLICATIONS

Our dedicated team is available to support you whenever you need us, with convenient access via text and live chat 7 days a week.

Whether you have a question at 8am or 6pm, we're here to put you at ease and provide the help you need.

We've made our SBUSixth admissions process as simple and seamless as possible, so whether you're a current Year 11 student looking to join us in Year 12, or looking to join in-year, we're here to help and offer guidance.

To apply, or if you have any questions regarding the process, then simply contact our admissions team.

Following your application, we'll arrange a telephone interview with you.

This is our opportunity to get to know you better, and for you to ask any questions you may have about your preferred course, or student life at SBUSixth. We can even provide private tours, and invite you to open events.

Once we've had chance to get to know you, and you've decided that we are the right place for you to take your next step on your career path, we won't keep you waiting; we'll let you know quickly whether you have been offered a place at SBUSixth. You will then be invited to attend a taster session to experience life here, and begin your LSBU Group educational journey.

If you are a Year 12 applicant, then simply check out our website, drop us an email, or give us a call, to find out about the entry criteria for our courses, and our admissions policy.

If you have any questions or need any assistance with your application, please don't hesitate to contact us via call, text, iMessage, or WhatsApp at **07586076634**.

Email us at marketing@sbusixth.ac.uk
Text or phone us on **07586076634**

+ Apply now at: www.sbusixth.ac.uk

SUCCESS STORIES



"I joined the sixth form in Year 12 and I have never looked back. The teachers are amazing and the facilities are top-notch. I have been able to explore my interests in engineering and have gained valuable experience through our employer-led projects and work experience opportunities. I am now going to university to study mechanical engineering and I know that SBUSixth has prepared me well for the next step in my education"

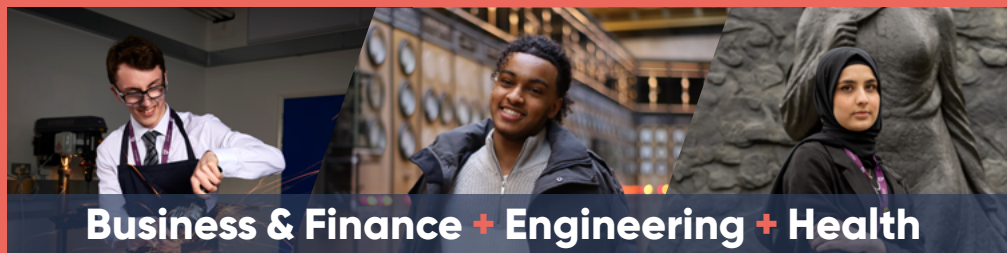
Otman B
Engineering student



"I was unsure about what I wanted to do after finishing school, but the careers and destinations team at the sixth form helped me to explore my options and find the right path for me. I am now doing an apprenticeship in Digital Marketing and I couldn't be happier. I am learning so much and earning a salary at the same time. I am so grateful for the support and guidance that I received at SBUSixth"

Nour Z
Business student

PATHWAYS & COURSES



Business & Finance + Engineering + Health

PATHWAYS

A-LEVEL PATHWAY | 2 YEAR COURSE

1

- + A-Level Biology
- + A-Level Physics
- + A-Level Maths
- + A-Level Chemistry
- + Health Extended Certificate
- + Engineering Extended Certificate
- + Business Extended Certificate
- BTEC Extended Certificate = 1 A-Level

**Pick 3
Subjects**

Entry requirements: 5 Grade 6's including Maths & English.

BTEC LEVEL 3 PATHWAY | 2 YEAR COURSE

2

BTEC Level 3 in either: Engineering | Health | Business & Finance
Entry requirements: 5 Grade 5s including Maths & English.

T LEVEL PATHWAY | 2 YEAR COURSE

3

T-Levels in: Finance | Health | Engineering
Each T-Level comes with 45 days industry placement
Entry requirements: 5 Grade 5s including Maths & English.

PROFESSIONAL PATHWAY | 1 YEAR COURSE

4

GCSE Maths and/or English Resit with a level 2 BTEC in either: Health | Business | Engineering
Entry requirements: Less than 4s in English &/or Maths.

T LEVEL FOUNDATION PATHWAY | ONE YEAR | 1 YEAR COURSE

5

Entry requirements: Less than 4s in English &/or Maths.

A-LEVELS, BTECS AND T-LEVELS EXPLAINED

A-LEVELS: These are traditional academic qualifications that are typically taken by students aged 16-18. A-Levels continue to be hugely valued and are a great choice if you are looking for more classroom-based study, or if you would like to keep your future career options more open.

BTECS: Highly vocational qualifications that are typically taken by students aged 16-18, and the equivalent to T-Levels in qualification. BTECS are a perfect fit if you are already focused on pursuing a specific career path, and are more suited to hands-on learning and project-based coursework; as opposed to formal exams and assessments.

T-LEVELS: A new type of technical qualification, introduced in 2020, that are the equivalent to gaining x3 A-Levels. T-Levels are ideally suited if you know the industry in which you want to work, but are not yet decided on a specific career path. A blend of the academic focus of A-Levels, and the hands-on learning of a BTEC, T-Levels involve a long industry placement.

WHICH SHOULD I CHOOSE?

There is no wrong answer.

All three options offered by SBUSixth will lead you to Higher Education via a university degree, a professional or degree apprenticeship, or direct to employment. It all depends on which is the best fit for you, based on your own career goals, personal qualities and study preferences.

As a starting point, we would suggest the following, but our friendly team of experts is always just an email or phone call away to provide more in-depth advice:

If you are interested in a more academic route, and the ability to combine subjects = **A-Level**

If you are interested in a specific trade or vocation and enjoy hands-on learning = **BTEC**

If you are interested in a combination of the two, with a long-term work placement = **T-level**

HEALTH

Levels offered:

Level 2 – Pre-Technical with GCSE Resit

Level 3 – BTEC and T-Level | A-Level

Entry requirements

Less than 4s in English &/or Maths

5 Grade 5s including Maths & English

Our innovative Health courses at SBUSixth have been designed in direct collaboration with the NHS, so whether you're interested in becoming a nurse, working in public health, healthcare science, or exploring another clinical or healthcare field, our expertly designed curriculum will give you the knowledge, skills and understanding you need to succeed.

Here's what you can look forward to:

Level 3 – BTEC and T-Level | A-Level

Experience-Driven Education:

You will work in a challenging yet friendly environment, based at our specialised and state-of-the-art Health Facility. Lessons are hands-on, innovative and practical, and you will also benefit from a professional work placement, so you will be work-ready by the time you complete your chosen pathway.

Tailored Support:

Our supportive team of tutors are committed to helping you achieve your goals, and will guide you through every step of your journey; teaching you industry-essential subjects like anatomy, nutrition, and biochemistry. With a focus on a person-centred approach to care, you will be prepared for a successful and rewarding career.

Impressive Stats:

LSBU Group has an outstanding, nationally-renowned reputation for providing Health education of the highest quality. In fact, 1 in 10 of all nurses in London were actually trained at LSBU. With a Health qualification from SBUSixth, you will be part of this proud legacy and a huge step closer to achieving your career goals.

Outstanding Opportunities:

Thanks to our long-standing partnerships with the NHS, you will get to work on real-world projects, and gain valuable hands-on practical experience. Whether you're interested in clinical research or children's nursing, or pharmacology or physiology, we have a range of stimulating opportunities available for you to explore.

Limitless Progression:

Not only are Health qualifications from SBUSixth hugely-respected in their own right, they also open up a world of educational and professional opportunities. You could even progress to a degree at LSBU's Institute of Health, following successful completion of the course, and really kick-start your journey to a fulfilling career, in a wide variety of healthcare roles.

Earn While You Learn:

Our partnerships with the NHS offer a range of apprenticeship opportunities, so you can gain real-life work experience, while earning a nationally-recognised apprenticeship qualification – which can even lead to a permanent job. What's more, you will even earn a real wage while you learn.



Level 2 – Pre-Technical with GCSE Resit

This is a one-year technical pathway designed to equip you with the skills, knowledge and qualifications to progress to Level 3 or T-Level study in Health the following year. The SBUSixth Level 2 – Pre-Technical Pathway in Health includes a Pre-U Certificate, employability development, digital skills, and Personal, Social, Health and Economic (PSHE) education, as well as real-life work experience.

We also offer GCSE resits in Maths and English, as part of this one-year course, to help you progress onto higher levels of education.

Kickstart your journey to a career in Health today with SBUSixth. Apply now!

+ Apply now at: www.sbusixth.ac.uk

ENGINEERING

Levels offered:

Level 2 – Pre-Technical with GCSE Resit

Level 3 – BTEC and T-Level | A-Level

Entry requirements

Less than 4s in English &/or Maths

5 Grade 5s including Maths & English

The world of Engineering is a fast-paced, innovative and fascinating industry that shapes the world around you. It relies on the ingenuity, precision, and technical skills of its professionals. Whether you're interested in mechanical, electrical, or civil engineering, at SBUSixth, we have everything needed to prepare you for a career in this constantly evolving and dynamic sector.

Here's what you can look forward to:

Level 3 – BTEC and T-Level | A-Level

Hands-On Experience:

Our state-of-the-art engineering labs are expertly-equipped to allow you to turn theory into reality, and gain real-world practical experience in a safe and controlled environment. You will develop essential knowledge in areas such as critical thinking, Computer Aided Design (CAD), problem-solving, and collaborative working practices; and develop the industry skills needed for professional life as an engineer.

Personalised Support:

SBUSixth's dedicated Engineering team are all experts in their field, and they'll use their knowledge and understanding to support you on every step of your journey. Not only will you develop your core knowledge in engineering principles, mathematics, and physics, but you will also be taught about the latest industry trends and technologies to help you stay ahead of the curve.

Employment Opportunities:

You will benefit from our long-standing partnerships with globally-respected engineering companies, and will have the chance to work on real-world projects and gain the valuable practical experience employers crave. Whether you're interested in renewable energy, smart cities, or sustainable infrastructure, we have an exciting opportunity to match.

Progression Pathways:

With an Engineering qualification from SBUSixth, you will have the tools to build your own future. Our courses open up a wide range of progression pathways to you; including progression to Higher Education at LSBU's School of Engineering, following successful completion of the course. Our graduates have gone on to work in a variety of engineering roles, in cutting-edge sectors, such as design, project management, automotive, digital, civil, and electrical engineering.



Apprenticeships:

SBUSixth's wide-range of apprenticeships are a fantastic way for you to receive on-the-job training in a real workplace, and get a nationally-recognised qualification specific to your chosen career. This is hands-on training for a really bright future, and what's more, you will also earn a real wage while you learn real-world skills.

Level 2 – Pre-Technical with GCSE Resit

This is a one-year technical pathway designed to equip you with the skills, knowledge and qualifications to progress to Level 3 or T-Level study in Engineering the following year. The SBUSixth Level 2 – Pre-Technical Pathway in Engineering includes a Pre-U Certificate, employability development, digital skills, and Personal, Social, Health and Economic (PSHE) education, as well as real-life work experience.

We also offer GCSE resits in Maths and English, as part of this one-year course, to help you progress onto higher levels of education.

[Apply now at: www.sbusixth.ac.uk](http://www.sbusixth.ac.uk)

Kickstart your journey to a career in Engineering today with SBUSixth. Apply now!

BUSINESS & FINANCE

Levels offered:

Level 2 – Pre-Technical with GCSE Resit

Level 3 – BTEC and T-Level | A-Level

Entry requirements

Less than 4s in English &/or Maths

5 Grade 5s including Maths & English

If you have what it takes to take the world of business by storm, or if you dream of starting a business and being your own boss, then SBUSixth can be your first step on the pathway to success. Our innovative curriculum is designed to prepare you for an array of high-value and dynamic careers, including accountancy, investment banking, management consultancy, and entrepreneurship.

Here's what you can look forward to:

Level 3 – BTEC & T-Level | A – Level

Future-Proof Curriculum:

The business world is fast-paced and ever-changing, so our unique and innovative SBUSixth curriculum is designed to ensure you are fully-equipped to adapt and evolve with the changes; while still teaching you the knowledge and skills that will always be required in your future career. Our courses combine classroom learning – using cutting-edge technology and resources – with practical work experience, all taught by an expert team of proactive tutors.

Professional Partnerships:

Through our extensive network of employer partners, you will have the opportunity to gain highly-valued work experience, expert business mentoring, and valuable professional networking opportunities; that, when combined with your accredited SBUSixth qualification, will give you a real head-start in this competitive industry.

Progression Pathways:

By enrolling on a Business and Finance course at SBUSixth, you become part of something much bigger; the LSBU Group. Because of our unique position, you will have the opportunity to continue your education and career progression at London South Bank University (LSBU), following successful completion of the course; who offer a range of Business programmes, including undergraduate and postgraduate degrees, and degree apprenticeships.

A World of Opportunity:

When you study Business and Finance at SBUSixth, you will have the opportunity to connect with like-minded students, industry professionals, and real-life employers at our in-person and virtual events and workshops. You will also learn about the latest trends and technologies – including FinTech and blockchain – and how they are shaping the future of the financial world. Our above-and-beyond approach to teaching can make you a highly sought-after candidate for top employers.

Kickstart your journey to a career in Business and Finance today with SBUSixth. Apply now!



Level 2 – Pre-Technical with GCSE Resit

This is a one-year technical pathway designed to equip you with the skills, knowledge and qualifications to progress to Level 3 or T-Level study in Business and Finance the following year. The SBUSixth Level 2 – Pre-Technical Pathway in Business and Finance includes a Pre-U Certificate, employability development, digital skills, and Personal, Social, Health and Economic (PSHE) education, as well as real-life work experience.

We also offer GCSE resits in Maths and English, as part of this one-year course, to help you progress onto higher levels of education.

+ Apply now at: www.sbusixth.ac.uk

A-LEVELS

Levels offered:

A-Level

Entry requirements

5 Grade 6s including Maths & English

A-Levels: A Pathway to Success

Unlock your potential and take your career prospects to a whole new level with our accredited A-Level courses at SBUSixth. Our carefully selected courses in Chemistry, Biology, Physics, and Mathematics build upon your existing knowledge, and provide you with an in-depth understanding of the subject, and introduce you to advanced theories and applied practices. A-Level study prepares you academically for a wide range of rewarding careers in Engineering, Business and Finance, and Health.

Here's what you can look forward to:

All-inclusive Curriculum:

Whichever A-level you choose to study, you will benefit from our state-of-the-art facilities, cutting-edge technology, engaging faculty of experts, and our supportive, nurturing, diverse and inclusive learning environment. You will be immersed in a world of hands-on learning, classroom teaching, and practical experiences that will build your critical thinking, problem-solving, and collaboration skills.

Progression Pathways:

Achieving three A-Level qualifications is a universally accepted and respected route to Higher education and further study, and with our strong position within the LSBU Group, you will have a natural route for progression to degree study at London South Bank University (LSBU), following successful completion of the course; right here in the heart of London. And if university is not for you, then A-Levels are also hugely valued by employers, and can fast track your career advancement.

Professional Partnerships:

It's not only our BTEC and T-Level students who get to benefit from our employer partnerships, as an SBUSixth A-Level student you will have numerous opportunities for mentoring, work experience, and networking with world-renowned businesses and Higher Education providers.

 Apply now at: www.sbusixth.ac.uk

Kickstart your pathway to success today,
with A-Levels at SBUSixth. Apply now!





HOW TO APPLY

Online

You can apply online using our website: www.sbusixth.ac.uk



Fill out your details



Select your courses



Wait for us to contact you to discuss your application

Via Email or Phone

You can also apply via Email and Phone.

*This is only for those without internet or with accessibility needs.

To join by email or phone contact:

marketing@sbusixth.ac.uk

Admissions phone number: 075 8607 6634

Contact us

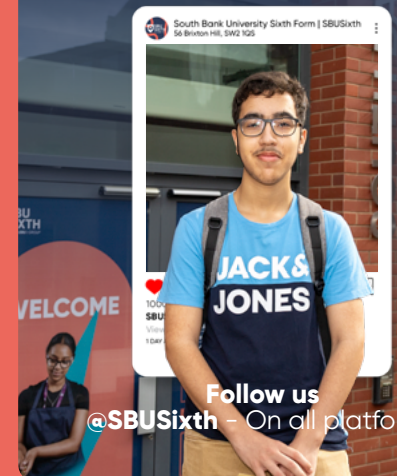
SBUSixth, 56 Brixton Hill,
Lambeth, SW2 1QS

020 7738 6115 | 075 8607 6634
Marketing@sbusixth.ac.uk

Find out more by attending one of our open days.

Sign up at:
www.sbusixth.ac.uk

SOCIAL MEDIA





**SBU
SIXTH**
Part of **LSBU** | GROUP



CREATE YOUR FUTURE.

Visit sbusixth.ac.uk to apply today.

South Bank
University Sixth Form
56 Brixton Hill
SW21 1QS

Marketing@sbusixth.ac.uk
07586076634 | 020 7738 6115
www.sbusixth.ac.uk